

Anticipating Uncertainty: Straddles Around Earnings Announcements

Chao Gao

Purdue University

Yuhang Xing

Rice University and CAFR

Xiaoyan Zhang

Purdue University, Tsinghua University and CAFR

November 2017

Abstract

Straddles on individual stocks generally earn significantly negative returns. However, average at-the-money straddles from three days before an earnings announcement to the announcement date yield a highly significant 3.34% return. The positive returns on straddles indicate that investors under-estimate the magnitude of uncertainty around earnings announcements. We find positive straddle returns are more pronounced for smaller firms, firms with higher volatility, higher kurtosis, more volatile past earnings surprises and less trading volume/higher transaction costs. This suggests that when firm signals are noisy, and/or when it is costlier to trade, investors underestimate the uncertainty associated with earnings announcements.

JEL classification: G02, G11, G13.

Keywords: uncertainty, volatility, straddle, earnings announcement.

We thank Jun Pan, Robert Battalio and seminar participants at Shanghai Advanced Finance Institute, Syracuse University and Tsinghua University for helpful comments. Our contact information is: Chao Gao, Krannert School of Management, Purdue University, 403 West State Street, West Lafayette, IN 47907, email: gao202@purdue.edu; Yuhang Xing, Jones School of Business, Rice University, 6100 Main street, Houston, TX, 77005, Tel: (713)3484167, email: yxing@rice.edu; Xiaoyan Zhang, Krannert School of Management, Purdue University, 403 West State Street, West Lafayette, IN 47907, Tel: (765)4967674, email: xiaoyan-zhang@purdue.edu. Both Xing and Zhang are also affiliated with China Academy of Financial Research at Shanghai Jiao Tong University.

Anticipating Uncertainty: Straddles Around Earnings Announcements

Abstract

Straddles on individual stocks generally earn significantly negative returns. However, average at-the-money straddles from three days before an earnings announcement to the announcement date yield a highly significant 3.34% return. The positive returns on straddles indicate that investors under-estimate the magnitude of uncertainty around earnings announcements. We find positive straddle returns are more pronounced for smaller firms, firms with higher volatility, higher kurtosis, more volatile past earnings surprises and less trading volume/higher transaction costs. This suggests that when firm signals are noisy, and/or when it is costlier to trade, investors underestimate the uncertainty associated with earnings announcements.

JEL classification: G02, G11, G13.

Keywords: straddle, earnings announcement.

I. Introduction

A typical public firm makes quarterly earnings announcements, which are one of the most important corporate events. These announcements reveal fundamental information about the firm, and investors respond actively to this information by comparing the announced fundamentals to their ex-ante expectations. Earnings announcement periods are information dense periods, and stock trading volume can increase by as much as 50%. This is also a period of high returns. Frazzini and Lamont (2006) find that 60% of a typical stock return can be achieved if investors trade only on each quarterly earnings announcement. Another well-known fact for earnings announcements is that, for both good news and bad, uncertainty builds up prior to the information event and plummets afterwards. For instance, both Patell and Wolfson (1979) and Dubinsky and Johannes (2006) document that uncertainty dramatically increases before earnings announcements and returns to normal afterwards.

Uncertainty is of key importance for asset pricing. Nevertheless, it is difficult to measure uncertainty directly, or investors' expectation of uncertainty. Given the drastic movements in uncertainty around earnings announcements, we consider these events to be a particularly interesting venue to study how investors form their expectations of a firm's fundamental uncertainty. To our benefit, the date of a future earnings announcement is usually publicly available ex ante¹, which facilitates the separation between uncertainty of the event dates and uncertainty related to firm fundamentals.²

¹ For instance, The Wall Street Journal keeps an earnings calendar for public firms, indicating the earnings announcement date. This data can be available months before the real announcement happens. According to Bagnoli, Kross, and Watts (2002), 80% of firms in 1998 choose to report earnings on the expected announcement dates. Dubinsky and Johannes (2006) find all their 20 sample firms announced earnings on expected report dates.

² We double check our results using expected announcement dates, without assuming the real announcement days are known ex ante. The results are similar.

The challenging question we try to answer in this paper is: can investors correctly anticipate the uncertainty dynamics around an earnings announcement? To focus directly on uncertainty rather than the direction of the news, we adopt a straddle option trading strategy. A straddle consists of a call and put option with matching strike prices and maturity dates. In our empirical design, we focus on delta-neutral straddles, which allows an investor to trade on underlying uncertainty without any directional exposure to the underlying security.

Expected returns on straddles typically include a volatility risk premium and a jump risk premium. Absent of such premia, Coval and Shumway (2001) show that under mild assumptions, the expected return on delta-neutral straddles should be equal to the risk-free rate. Coval and Shumway (2001) further document that delta-neutral straddles on the S&P 500 index earn approximately -3% per week and interpret this as consistent with market volatility carrying a negative risk premium. We confirm Coval and Shumway's (2001) finding on straddle returns at the individual stock level. In particular, equal-weighted delta-neutral at-the-money individual stock straddles have an average return of -2.12% per week with a t-statistic of -11.92. At daily and monthly frequencies, the delta-neutral straddle earns -0.19% and -17.09% on average, respectively. The negative straddle return is robust to volume weighting and open interest weighting.

If participants in the options market correctly forecast the magnitude of the uncertainty changes associated with earnings announcements, then straddle holders should earn similar negative returns on average around earnings announcements. In striking contrast, delta-neutral at-the-money straddles earn significantly positive returns during earnings announcement periods. As mentioned earlier, earnings announcement dates are scheduled ex ante and are public information appearing on almost all major financial websites from The Wall Street Journal to Yahoo! Finance. We construct straddles three and one trading day(s) before the scheduled earnings announcement

date and hold the straddle until the earnings announcement date or one day after the earnings announcement date. The straddle returns around earnings announcements are all significantly positive across all holding periods we test/consider, ranging from 2.10% to 3.34%. We further examine straddle returns for the pre-announcement period and the announcement period. Our empirical results show that the positive straddle returns over the pre-announcement period is particularly large, significant and robust.

The contrast of significantly positive straddle returns around earnings announcements and significantly negative straddle returns over the whole sample is puzzling. Various mechanisms could be driving this result. One could argue that the positive straddle returns around earnings announcements represent compensation for risk. In this paper, to reduce measurement errors in parameters estimated over extremely short periods, we work with raw returns of delta-neutral straddles without any risk adjustments. Delta-neutral straddles normally have exposure to market volatility and jump risks as they are not gamma-neutral or vega-neutral. Previous studies, such as Cremers, Halling and Weinbaum (2015), show that both market volatility risk and market jump risk carry significant and negative risk premia. So, it is unlikely that the positive straddle returns around earnings announcements represent compensation for these negatively-priced risk factors.

If the positive straddle returns are not compensation for systematic risks, this would indicate that the market *underestimates* the uncertainties around earnings announcement days. What mechanism is behind this underestimation? We propose several non-exclusive explanations. First, we believe the noisiness of a firm's signal received by its investors can substantially affect an investor's expectation about future uncertainty associated with this firm. If there is less noise in the firm's signals, it may be easier for investors to form a more accurate expectation about future

uncertainty, and vice versa³. That is, the underestimation of uncertainty and positive straddle returns would be more pronounced for firms with noisier signals. Second, it is possible that the straddles are too expensive to trade, and thus the option prices fail to reflect the quick changes in uncertainty around earnings announcement days. This would be consistent with the limits to arbitrage story in Merton (1987). Third, investors might have ambiguity aversion and be reluctant to trade prior to an earnings announcement, when the ambiguity reaches its peak. This leads options prices to fail to reflect the most current and relevant information currently available to the market. In other words, due to the high ambiguity related to the distribution of earnings surprises, ambiguity averse investors might simply avoid trading these options. If the ambiguity averse investors dominate in the options market, we are likely to observe lower trading volume around the event.

We find evidence broadly consistent with the first two explanations. Firms with noisier signals, such as firms with higher historical volatilities, larger historical earnings surprises and more volatile past earnings surprises, all experience stronger underestimation of uncertainty and higher straddle returns around earnings announcements. Meanwhile, firms with less volume traded and wider bid-ask spreads, for both options and the underlying stocks, also have higher positive straddle returns. Not surprisingly, straddle returns for firms with noisy signals and higher trading costs tend to overlap substantially. They tend to be smaller firms with less analyst coverage, both of which are associated with less efficient information environments. We also show that option

³ Investors, according to Hilbert (2012), display more behavioral biases when there is more noise in the signal. A particular relevant behavioral bias is conservatism, meaning that investors are too slow to draw inferences from data, which leads to investors' under-reaction to information in the data. In our case, when investors anticipate the uncertainty to arrive and get resolved around earnings announcements, conservatism means that they underestimate the magnitude of uncertainty the event brings to the price process.

trading volume spikes around earnings announcement dates, and this makes the ambiguity aversion argument less likely.

Our paper is closely related to the line of research on option returns including straddle returns, such as Coval and Shumway (2001). While Coval and Shumway (2001) looks at option returns at the index level, both Dubinsky and Johannes (2006) and Goyal and Saretto (2009) examine individual equity options returns. Dubinsky and Johannes (2006) focus on earnings announcements, and find substantial price jumps on earnings announcement days. They significantly improve the pricing errors of the standard option pricing models by incorporating jumps on earnings announcement days into the models. Goyal and Saretto (2009) examine straddles and find that straddles on stocks with larger differences between historical realized volatility and implied volatility tend to have higher returns. Goyal and Saretto (2009) interpret their results to be consistent with the Barberis and Huang (2001) hypothesis that people display both loss aversion and mental accounting. A contemporaneous paper by Govindaraj, Liu and Livnat (2012) examines whether any return differences exist between straddle portfolios with the lowest and highest past earnings surprises. While with a very different focus, Govindaraj et al (2012) also document significant positive straddle returns using a larger window around an earnings announcement.

Our study is also related to under-reaction, over-reaction and market efficiency literature in the options market. Stein (1989) is the first to document the over-reaction in the long-term implied volatility on S&P 100 index as this implied volatility moves by same amount as the short-term implied volatility. Poteshman (2001) examines the same issue using S&P 500 index options and finds evidence for both long-term over-reaction and short-term under-reaction. The rationalizations for financial market over- and under-reaction are mostly based on behavioral

explanations. Lemmon and Ni (2014) show that there is a significant difference between the clientele for index options and individual stock options. Compared to index option trading, which is largely dominated by institutions, stock option trading is mainly driven by individual investors. Individual options traders are more likely to exhibit cognitive biases than institutional traders, which is consistent with our empirical results. In terms of market efficiency as measured by transaction costs, De Fontnouvelle, Fische and Harris (2003), Mayhew (2002), and Battalio, Hatch and Jennings (2003) all find that option trading is costly, but market efficiency improved (to different degrees) around the 2000s when the options market moved to a national system.

Compared to the previous literature, our paper is one of the first to document the puzzling empirical phenomenon of positive and significant stock straddle returns around earnings announcements, which contrasts with the significantly negative stock straddle returns on non-announcement days. The majority of current options pricing models fail to align with or explain the results that we present in this paper. The positive straddle returns around earnings announcement periods are more pronounced for the pre-announcement effect and for firms with noisier signals or higher transaction costs.

The paper is organized as follows: Section II introduces the data. Section III presents the main findings of positive straddle returns around earnings announcement periods. In Section IV, we examine straddle returns in the cross-section to identify reasons for the positive straddle returns around earnings announcements. Section V concludes.

II. Data

Our sample period is January 1996 to December 2013. We obtain information about the underlying stocks, such as returns and security characteristics, accounting data, and earnings

announcement data from CRSP, COMPUSTAT, and IBES, respectively. Our option data is from Option Metrics, which provides end-of-day bid and ask quotes, open interest, volume, implied volatility and option Greeks for all listed options. Unlike the stock data, the option data is vast, and might be noisy due to liquidity issues and market microstructure issues. Therefore, in this paper, we focus on short-term at-the-money options, because these options are the most liquid. Meanwhile, to avoid the bid-ask bounce from daily closing prices, we use the closing bid-ask average value to compute option returns. Finally, to construct straddles, we pair call and put options with matching strike prices and maturity dates.

Given the above considerations, we apply the following filters to the option data: (1) the option prices are at least \$0.125; (2) the underlying stock prices are at least \$5; (3) options have positive open interests; (4) we require the bid and ask price to satisfy basic arbitrage bounds to filter out erroneous observations;⁴ (5) we only include options with 10 to 60 days to maturity; (6) at the time of the straddle formation, we include only options with an absolute delta between 0.375 and 0.625 (as in Bollen and Whaley (2004)); (7) we define moneyness of the option, “money”, as strike price over the previous day’s stock price, and to be considered at-the-money, we require options to have moneyness between 0.9 and 1.1; (8) to form straddles, we only include paired calls and puts with matching time-to-maturity and matching strike price; (9) to ensure our ability to form straddles around earnings announcements, we require options to have price information at the beginning and the end of the holding period.⁵

In Table 1, we present summary statistics for the stocks and straddles included in our sample. Panel A reports firm-level characteristics: market capitalization, book-to-market ratio

⁴ Arbitrary boundaries include: $\text{bid} > 0$, $\text{bid} < \text{offer}$; for put options we require $\text{strike} \geq \text{bid}$ and $\text{offer} \geq \max(0, \text{strike price} - \text{stock price})$; for call options we require $\text{stock price} \geq \text{bid}$ and $\text{offer} \geq \max(0, \text{stock price} - \text{strike price})$.

⁵ Later, we impose one additional liquidity filter to examine our results’ robustness for the most liquid options.

computed as the ratio of book value of equity over market value of equity, monthly stock return, annualized stock return volatility, skewness and kurtosis computed from the past 3-month daily stock returns. These firm characteristics are observed at the end of each calendar quarter-end, and the summary statistics are computed by pooling over all firms and all quarters.

We provide the number of observations, mean, median and standard deviation for each of the firm characteristic variables. In total, our sample includes more than 40,000 firm-quarter observations. For each quarter, the number of sample firms ranges between 165 and 1162.⁶ Compared to earlier studies using 20 firms such as Dubinsky and Johannes (2006), our sample covers a good size of the cross-section of stocks. The median market cap in our sample is about \$2.297 billion. Over the same time period, the median market cap for NYSE firms is \$ 1.3 billion. So our sample firms are larger than a typical NYSE firm. For book-to-market ratios, the median of our sample is 0.356. During the same period, the median book-to-market ratio for NYSE firms is 0.576. This indicates our sample includes more value firms than growth firms when compared to the NYSE firms. The median past 12-month stock return is 12.0%. The median stock return volatility is 37.8%, which is lower than an average NYSE firm's volatility of about 55%. Medians for skewness and kurtosis are 0.082 and 3.877, respectively. Overall, our sample firms are larger-than-average with lower-than-average book-to-market ratios. This is consistent with our knowledge that option listing is more prevalent for larger firms.

Panel B reports summary statistics for individual straddles satisfying filters (1) to (9), and the summary statistics are computed by pooling over all straddles and all quarters. The mean of moneyness is 1.011, and days to maturity are on average about 38 days. As required by our filters,

⁶ Our sample data starts in 1996, during which time only very large firms have listed options. For 1996 quarter 3, after all filters, we have 165 firms. Across all quarters between 1996 and 2013, on average our sample includes 669 firms in the cross section.

our sample includes only short-term at-the-money straddles. We compute open interest for a straddle as the number of contracts outstanding in the 100's by summing open interests from both calls and puts in the straddle. Similarly, we compute the daily volume of a straddle as the number of contracts traded in 100's by summing the daily volumes from both calls and puts in the straddle. The average open interest is 2,431 round lots, and the average daily volume is 401 round lots, indicating adequate liquidity. Implied volatility for a straddle is the average of implied volatility of calls and puts in the straddle. It is on average 47.4%, which is higher than the corresponding daily return volatility in Panel A of 43.1%. The fact that implied volatility is higher than historical volatility is expected, because implied volatility contains a component of the volatility risk premium. Overall, we are confident that our sample includes only close to maturity, at-the-money options with reasonable trading activities.

III. Straddle Returns

There are two approaches to construct straddles: the simple straddle and the delta-neutral straddle. For the simple straddle, the investor purchases a pair of call and put options with matching strike prices and maturity dates. For the delta-neutral straddles, we rely on option deltas, which measure the option price's sensitivity to the underlying price movements. When we pair the puts and calls for delta-neutral straddles based on strike and maturity, the weights are adjusted to make the straddle delta equal zero. For any pair of put and call options, suppose we define $DELTA_{t-1}^{call}$ and $DELTA_{t-1}^{put}$ as the deltas of the call and the put options, respectively, at the end of formation day $t-1$, and w_{t-1} as the weight on the call option. Then the straddle's delta becomes:

$$(1) \quad DELTA_{t-1}^{straddle} = w_{t-1}DELTA_{t-1}^{call} + (1 - w_{t-1})DELTA_{t-1}^{put}.$$

By setting the straddle's delta zero to ensure that the straddle is delta neutral, the weight on the call option is determined as

$$(2) \quad W_{t-1} = - \frac{\text{DELTA}_{t-1}^{\text{put}}}{\text{DELTA}_{t-1}^{\text{call}} - \text{DELTA}_{t-1}^{\text{put}}}$$

Theoretically, the delta-neutral straddle has no exposure to price changes in the underlying asset. Given that the purpose of this study is to capture the uncertainty dynamics, independent of the direction of news on earnings announcement days, we focus on delta-neutral straddles. Results using simple straddles are quantitatively similar to those using delta-neutral straddles, and are available upon request. For the delta-neutral straddle, to observe the return dynamics around the event window, we adopt a buy and hold strategy. That is, the share numbers of calls and puts are set at the formation period, and we do not rebalance the share numbers over the event window.

It is possible that there are multiple pairs of straddles on the same stock over the same holding period. When this happens, we consider three weighting schemes across straddles for the same firm: equal weight, volume weight and dollar open interest weight.⁷ The volume weights are computed as the sum of the daily volumes of all calls and puts in the straddle from previous day. The dollar open interest for one straddle is computed based on option information from the previous day as follows:

$$(3) \quad \text{DOI} = (\text{CALL_PRICE} + \text{PUT_PRICE}) \\ * \min(\text{CALL_OPEN_INTEREST}, \text{PUT_OPEN_INTEREST}).$$

⁷ From results not shown, we also compute open-interest weighted returns, and results are very similar.

which is the maximum possible dollar open interest for this straddle from previous day. We weight each straddle within the same firm according to its DOI.⁸ The idea of both volume weighting and dollar open interest weighting is to focus on options with higher liquidity.

The expected return on a straddle depends on its exposure to systematic risks, such as market risk, market volatility risk and market jump risk. Since delta-neutral straddles have zero exposure to the underlying asset, they presumably have little exposure to the market return. From results not reported, we also construct beta-neutral straddles that have zero exposure to market risk, and the results are similar to those of delta-neutral straddles. To control for exposure to market volatility risk and market jump risk, Cremers et al (2015) construct delta-neutral, vega-neutral and gamma-neutral index straddles by using index options with different maturity dates. However, since individual stock options tend to be much less actively traded than index options and our sample is restricted to short-term options, it is difficult to construct reasonably liquid straddles that are simultaneously vega-, gamma-, and delta-neutral. Alternatively, we can estimate an individual straddle's exposures to market volatility and jump risk around earnings announcements. Given our short holding period for each straddle, this estimation is infeasible. Therefore, we choose to focus on delta-neutral straddles, rather than vega- or gamma-neutral straddles. Meanwhile, both market volatility premium and market jump premium are found to be negative in the literature, and straddles in general have positive exposures to both volatility risk and jump risk. Not adjusting for any volatility risk premium or jump risk premium would understate the returns on straddles, which biases against our findings of positive straddle returns.

⁸ From results not reported, we try a few alternative approaches, such as replacing the minimum operator with the sum of the call and put open interest. Results stay similar.

In Section III.A, we examine straddles formed over all days and use them as a benchmark. Next, we examine the dynamics of uncertainty around earnings announcement days in Section III.B. We report straddle returns formed around earnings announcement days, using a pooled sample in Section III.C. To better examine day-by-day changes in the straddle returns, we apply a time series approach with more liquidity filters on the options in Section III.D. Robustness checks are provided in the Internet Appendix. Pooled samples in Section III.A to Section III.C allow us to use clustered standard errors across time to be conservative, and time-series samples with stricter liquidity filters in Section III.D and the Internet Appendix allow us to follow time dynamics and offer a complimentary perspective.

A. Straddle Returns over All Trading Days, a Pooled Sample

To establish the benchmark straddle returns for future comparison with straddle returns around earnings announcements, we examine daily, weekly and monthly straddle returns over all trading days from 1996 to 2013. These straddles satisfy filters (1) to (8) in Section II. For daily straddle returns, we construct the straddle based on the midpoint of the previous day's closing ask and bid prices to identify the at-the-money options and compute the straddle return over the next day using the midpoints of the closing ask and bid prices. The holding period of the at-the-money daily straddle is one day. For weekly straddle returns, we hold the straddle for five business days from Tuesday to the following Tuesday. We construct monthly straddles from month end to the next month end.

The average delta-neutral straddle returns are reported in Panel A of Table 2. To compute the average returns, we first use equal weight/volume weight/dollar open interest weight for different pairs of straddle for one firm at the same time. Next, we average straddle returns over time and stocks. We report t-statistic clustered by date. We start with the equal-weighted straddle

returns on the left. For a one-day holding period, the average straddle return is -0.19% (-47.50% if annualized), with a significant t-statistic of -5.11. For a weekly holding period, the average equal weighted straddle return is -2.12% (-110.24% if annualized), with a t-statistic of -11.92. If we extend the holding period to a month, the holding period return becomes -17.09% (-205.08% if annualized), with a t-statistic of -26.82. For the volume-weighted returns and dollar-open-interest-weighted returns in the right half panels, the magnitude and significance are similar to the equally weighted results.⁹

The strong negative returns associated with straddles are not surprising, given the findings in Coval and Shumway (2001), and Cremers et al (2015). Meanwhile, Bollen and Whaley (2004) shows that on average straddles lose money, about 3% per week, which is comparable with the magnitude of our findings.

B. Uncertainty around Earnings Announcements, a Pooled Sample

Given that straddle returns reflect investor beliefs about future uncertainty, we start by examining the dynamics of uncertainty around earnings announcements, before we discuss straddle returns around earnings announcements.

Following previous studies such as Chae (2005) and Sarkar and Schwartz (2009), we assume that earnings announcements are pre-scheduled events and the timing of the events are public information. In particular, Chae (2005) studies the relationship between trading volume and information asymmetry around scheduled vs. unscheduled announcements. Given that the literature has treated earnings announcements as scheduled events, we generally consider the

⁹ When we compute the daily, weekly and monthly straddle returns, we maximize the usable data by only requiring the price data being available at the beginning and end of the holding period. Therefore, the straddles included in daily, weekly and monthly holding samples can be different, which explains the difference in magnitudes across different holding periods.

abnormal straddle returns around earnings announcement are not driven by earnings announcement dates not being publicly available to investors. But for robustness and completeness, later in the discussion, we relax the assumption that earnings announcement dates are known ex ante. Instead, we re-examine the main results within a subsample, where the expected earnings announcement dates exactly fall on the real earnings announcement days.

We obtain the earnings announcement dates from IBES. We define day 0 as the event day, during which earnings is announced. The trading day before the announcement is day -1, and the trading day after the announcement is day 1. One complication in the real world is that some announcements are made before the market opens, while others occur after the market closes. Meanwhile, previous studies also show that data on exact announcement hours can be imprecise. Therefore, we choose to only use the announcement date and make no adjustments for announcement hour.

A natural measure of uncertainty in stock prices is the realized volatility. Here we focus on the daily range-based volatility (not annualized), which is computed as the difference between the daily high and low trading prices, divided by the closing price. The range-based volatility measure heuristically shows the range of price movements within a day, and higher range-based volatility means higher uncertainty. Alizadeh, Brandt, and Diebold (2002) show empirically that the range-based volatility is highly efficient and robust to microstructure noise. Alternatively, a “popular” uncertainty measure is the implied volatility of an option, which is interpolated from the option price data based on a benchmark option pricing model. There are two differences between realized volatilities and implied volatilities. First, realized volatilities measure how price reacts to new information in real time, while implied volatilities measure investors’ anticipation of future volatility. Second, even though implied volatility is named “volatility”, it is a price measure,

reflecting information from option prices. Higher option prices mean higher implied volatilities and vice versa. Thus, implied volatility measure contains more information than just volatility as option prices also reflect volatility risk premium and/or jump risk premium. In contrast, realized volatility is a pure volatility measure.

Figure 1 plots the above two measures from 30 days prior to an earnings announcement to 30 days after an earnings announcement. Given that earnings announcements occur quarterly with about 60-65 trading days in between, the horizon of $[-30, 30]$ roughly covers the quarterly earnings announcement cycles. In Panel A, we average range-based volatilities for all firms in our option data sample for each trading day. Starting from day -30, the mean range-based volatility is 0.036. Between day -30 and day -2, the range-based volatility measure is almost flat and only increases slightly to 0.039 on day -1. On day 0, the range-based volatility jumps to 0.056 and then peaks at 0.059 on day 1. On day 2, the range-based volatility collapses to 0.041 and then stays almost flat until the next earnings announcement. The pattern in range-based volatility clearly shows that stock prices become volatile starting from day -1, with uncertainty peaking on day 0 and day 1. The uncertainty resolves after day 2. This pattern is expected because the earnings announcement period is the most information-dense period for a typical firm, and the stock market reacts to new information in real time.

In Panel B, we average implied volatilities of firm level at-the-money calls and puts for each trading day from 30 days before the earnings announcement to 30 days after the earnings announcement. The pattern of implied volatility in Panel B slightly differs from what we observe in Panel A. Starting from day -30, the mean implied volatility is 0.467, and it gradually increases to 0.499 on day -4. Between day -3 and day -1, the slope for implied volatility becomes steeper with the implied volatility increasing to 0.514 on day -1 which is the highest point on the graph.

On day 0, the average stays around 0.506 which is still relatively high. On day 1, the implied volatility crashes down to 0.464. Over the next 30 days, the implied volatility remains mostly flat. For day 30, the implied volatility is 0.463, which is consistent with the level observed on day -30. The implied volatility generally stays low until the next earnings announcement, unless some other important event happens unexpectedly. Unlike the realized range-based volatility reported in Panel A, which reacts to news arrival in real time, the implied volatility is more about anticipation of future news arrival.

The dynamics of implied volatility around earnings announcements indicate that options might become more and more expensive as an earnings announcement approaches. After the uncertainty resolves on day 0, the implied volatility returns to a normal level. As mentioned in the introduction, this pattern has been known for over 30 years, since Patell and Wolfson (1979). However, this does not necessarily mean option prices would increase as implied volatility increases, because the effect of implied volatility might be offset by the fact that the options are moving closer to their expiration dates.

C. Straddle Returns around Earnings Announcements, a Pooled Sample

We construct straddles over different windows around earnings announcements. From the dynamics of range-based volatility and implied volatility, we choose to focus on a spectrum of strategies that cover the running up of uncertainty until uncertainty is partially or fully resolved. To be specific, the starting dates of the straddles are chosen among -3 and -1, and the ending dates are -1, 0 or 1. To be included in the sample, we require all the options to be short term, with expirations between 10 and 60 days away, and the moneyness of the straddle to be between 0.9 and 1.1 at the beginning of the holding period. For instance, for the strategy over [-3,0], we buy the straddle on day -3, sell the straddle on the earnings announcement day, and the holding period

for this straddle is 3 days. To make sure the straddle is at-the-money when the strategy is formed, we require moneyness (strike price divided by previous day stock price) to be between 0.9 and 1.1 on day -3. The longest holding period is 4 trading days for strategy [-3,1], and the shortest holding period is 1 trading day for strategy [-1,0]. For completeness, we consider 5 combinations of starting and ending dates, and they are [-3,-1], [-3,0], [-3,1], [-1,0] and [-1,1].

We would like to make two comments regarding the complexity of the straddle return construction. First, as explained in Blume and Stambaugh (1983), if investors use daily closing prices rather than bid-ask average prices, then a bid-ask bounce bias would be introduced into returns, which could significantly increase the returns. Blume and Stambaugh (1983) recommend the use of bid-ask average prices to compute returns rather than using daily closing prices, and they recommend direct estimation of holding period returns rather than compounding daily returns to achieve holding period returns. Therefore, we use bid-ask average prices to compute returns throughout the paper, and we mostly focus on holding period returns in this section. But to understand day by day changes in straddle returns, we compute daily returns in a later section. To minimize the Blume and Stambaugh bias in the daily returns, we use daily bid-ask average prices for the return calculation, and we impose stricter liquidity filters to reduce potential market micro-structure noises in the illiquid options. These results are discussed in Section III.D.

Second, even though the five buy and hold strategies above may have overlapping holding windows, they normally do not contain identical options, and cannot be directly compounded across different holding windows. There are two possible scenarios. First, for strategies starting from different days, due to possible changes in underlying prices, the moneyness of the same straddles may change from one day to another, which results in different component straddles for

strategies starting from different days.¹⁰ Second, for strategies starting on the same day, but not ending on the same day, they still might not contain identical straddles. The reason is that we require component straddles to have valid closing bid-ask average prices on ending days, and some straddles might not have valid prices on different ending days. To summarize, we cannot make inferences directly from compounding returns on strategies from different windows in this section. In Section III.D, we require valid bid-ask average prices on every day within the event window, and the daily returns can be directly compounded into holding period returns.

We consider two effects around earnings announcements: the pre-announcement effect and the announcement effect. The first effect is relevant for strategies ending on day -1 or earlier, which is strictly prior to the announcement. The price of a straddle might increase prior to the announcement date, because uncertainty in stock price is increasing. However, the opposite can also happen. Dubinsky and Johannes (2006) show that theoretically option prices might not increase prior to an earnings announcement as the effect of an increase in uncertainty might be offset by a shortened time-to-maturity. Empirically, this remains an open question. If the straddle returns prior to the earnings announcement dates are positive, this indicates the effect of increased uncertainty dominates the effect of the shortened time-to-maturity.

The second effect is the announcement effect. After the uncertainty is resolved, if the realized surprise is large enough, either the put or call would end up being deep in the money, and cover the loss from the counterpart, which leads to the positive straddle returns. This is relevant for strategies ending on day 0 and day 1. According to Berkman and Truong (2008), more than 30% of firms announce their earnings after the market close during the period from 1995 to 1999.

¹⁰ For instance, strategy [-3,0] might contain different sample straddles than strategy [-1,0], even though the holding window of strategy [-3,0] nests that of strategy [-1,0]. The reason is that we only use at-the-money options, and this criterion can be quite different on day -3 and on day -1.

Thus, holding the straddles until one day after the earnings announcement dates guarantees that all the uncertainties associated with the earnings release are resolved.

In Panel B of Table 2, we report average short-term at-the-money delta-neutral straddle returns. The format of reporting is fully compatible with Panel A of Table 2. We require all the straddles to have time-to-maturity between 10 and 60 days and the moneyness (stock price divided by strike price) to be between 0.9 and 1.1. For each firm around each earnings announcement, we might have multiple pairs of straddles, and we include results for three different weighting schemes among straddles within the same firm: equal-weighting, volume-weighting and dollar-open-interest weighting. For each of the 5 strategies, we pool across all stocks over all quarters to compute the mean and cluster t-statistics on date.

The first three strategies are [-3,-1], [-3,0] and [-3,1], all of which involve buying an at-the-money straddle on day -3 before the uncertainty peaks. We first look at the equal-weighted results on the left. Straddle holding period returns over [-3,-1], [-3,0] and [-3,1], are 1.90%, 2.60% and 1.98%, respectively. All returns have significant t-statistics, ranging from 8.55 to 16.35. The strategy of [-3,-1] mainly captures the run up of uncertainty. The strategies [-3,0] and [-3,1] capture both the running up of uncertainty and the realized surprise. Interestingly, strategy [-3,1] has a 0.62% lower return than the [-3,0] strategy, indicating that over day 0 to day 1, the return on a straddle might actually be negative.

The last two strategies are [-1,0] and [-1,1]. We explain earlier that the set of straddles built on day -1 and on day -3 are not directly comparable, because the criterion for being at-the-money is based on the previous day's underlying stock price. Given volatile underlying price movements around earnings announcements, the moneyness for the same options on day -3 could be quite different than those from day -1. The holding return for strategy [-1,0] is 1.88%, with a t-statistic

of 16.36, and the holding return for strategy $[-1,1]$ is 2.43% with a t-statistic of 13.39. Compared to the first three trading strategies, day -1 is usually the peak day for uncertainty, so both strategies' significant and positive returns are probably driven by the realized surprise on day 0 and day 1.

When we switch to the volume-weighted returns and dollar-open-interest-weighted returns in the right part of the panel, all straddle returns are still positive and significant with similar magnitudes as those with equal weighting. To ensure that the positive straddle returns are not driven by how we construct straddles, we conduct additional robustness checks on simple straddle returns. From results not reported, with different combinations of holding periods and weighting schemes, the simple straddle returns are between 0.80% and 2.25%, and they all have t-statistics above 6.0.

We discuss earlier that the finance and accounting literature mostly treats earnings announcements as a pre-scheduled event and public information. However, it is still possible that there are firms which announce earnings on unscheduled dates. For these events, unscheduled announcements mean that investors, before the real announcements, would not have incorporated any information about increasing volatility associated with earnings announcement, and the unexpected increases in volatilities would lead to positive straddle returns, which could drive our findings of positive straddle returns.

We address this concern using a counter-example. If the surprise announcement is the main reason for positive straddle returns, then if there is no surprise on earnings announcement days, we should not observe positive straddle returns around earnings announcement days. In other words, if the earnings announcement dates are well expected, and if we still observe positive straddle returns on the expected announcement dates, then the main driver of the positive straddle returns is unlikely to be the surprise announcements.

Therefore, we focus on a subsample where the “expected earnings announcement dates” coincide with the real earnings announcement days. For observations in this subsample, we believe the uncertainty of earnings announcement dates is minimized. If our results hold for this subsample, it supports the notion that our results are not driven by the uncertainty in earnings announcement dates.

Following previous literature on expected earnings announcement dates, we take two approaches. The first is the algorithm as in Givoly and Palmon (1982), which has been widely adopted in earlier studies, such as Chambers and Penman (1984) and Begley and Fischer (1988). Givoly and Palmon (1982) use a firm’s prior announcement date as a proxy for the current year’s expected announcement date. In addition to using a firm’s prior year’s announcement date as the current year’s expected announcement date, we add in one more case. We use the number of the day of the week in that month from last year’s announcement date as a proxy for this year’s expected announcement date. For instance, if last year’s announcement is the third Friday of October and this year’s announcement is also on the third Friday of October, then we include this announcement in our sample of “expected announcement date” being equal to the real announcement date. With this simple procedure, we identify 28.45% of the announcements to be exactly on the expected earnings announcement date.

Table 2 Panel C reports the straddle returns for the subsample when announcement dates coincide with the expected announcement dates following the Givoly and Palmon (1982) procedure. Again we consider three different weighting schemes: equal-weight, volume-weight and dollar-open-interest-weight. Starting from equally-weighted results, the straddle returns over different holding period ranges between 1.90% and 2.57%, with highly significant t-statistics between 6.70 and 12.94. Compared to results in Panel B, the magnitude in Panel C is comparable.

The results on volume-weighted straddles and dollar-open-interest-weighted straddles are quite similar. Overall, for the restricted sample using Givoly and Palmon (1982) algorithm, we still find straddles around earnings announcements bring positive and significant returns.

The second approach we adopt for identifying expected earnings announcement date is the algorithm in Cohen, Dey, Lys, and Sunder (2007). We divide our whole sample into 4 sub-periods of four years and 1 sub-period of two years. We estimate a model for each of the four fiscal quarters for each firm within each sub-periods. For each firm and each fiscal quarter in each sub-period, we use the median announcement date as a proxy for the expected announcement date. To be more specific, we identify each firm-quarter earnings announcement date with the day of the quarter (for instance, third day of the quarter, 65th day of the quarter) and then we compute the median day of announcement. In our sample, 29.29% of announcements dates are exactly on the expected announcement date; 53% of the announcements that are within 1 day of the expected announcement date; and 94.5% of the announcements that are within an 11-day window of expected announcement dates. We take only the subset of announcements that coincide with the expected announcement date and re-examine the straddle returns around these events.

In Panel D of Table 2, we report straddle returns around earnings announcements where the actual announcements fall on the expected announcement dates using the Cohen et al (2007) algorithm. The equal-weighted straddle returns are between 1.41% and 2.58% with highly significant t-statistics. We find the magnitude of the straddle returns are in line with those in Panel B and C and are all highly significant. Results using volume-weighted and dollar-open-interest-weighted returns share the same pattern.

With these two subsample results using expected earnings announcement dates, it is unlikely that our results are driven by unexpected earnings announcements. Even though it is still

possible that in some cases, the unexpected earnings news might contribute to the positive straddle returns, it is unlikely that the positive straddle returns are mainly driven by the surprise announcements.

D. Day-by-Day Straddle Returns, Time-series Sample with Stricter Liquidity Filters

Our discussion from Section III.A to Section III.C has been based on pooled samples of observations across all firms and all dates, using filters (1) to (9) in the data section. The benefit of pooled samples is that they are straightforward, and we can compute clustered standard errors. However, the pooled statistics do not provide information on time-variations, and do not allow different weighting schemes across firms. Next, we examine whether the straddle returns around earnings announcements are still significantly positive when we compute the time-series of straddle returns averaged over all the firms, which directly show time variation and allow for different weighting across firms.

We also compute daily straddle returns during the holding period window to more closely track both the pre-announcement effect and announcement effect. To facilitate the comparison between holding period straddle returns and daily straddle returns, we apply an additional liquidity filter. Given that the earlier sections use filter (1) to (9), we refer to this filter as filter (10): we only include matching call and put options with daily non-missing bid and ask price quotes, daily positive open interests, and daily positive trading volumes for every day during the holding period. This additional filter serves two purposes. First, the liquidity filter essentially excludes less liquid options, and we can potentially mitigate related market micro-structure biases. Second, now the holding period returns and the daily returns are directly comparable with the same straddle components within each holding window. With this new filter, the total number of observations decreases from 76,848 to 42,080. On average, we still have more than 310 firms each quarter,

which provides decent coverage of the cross sectional data. In Internet Appendix Table 1, we provide summary statistics for this smaller sample with filter (1) to (10), which is directly comparable to Table 1 with filter (1) to (9). Not surprisingly, relative to the sample in Table 1, firms in the new sample are larger, have lower stock return volatilities, and the corresponding options have larger open interests and higher trading volumes.

Here are the specifics for computing the straddle return for the time series. First, within each firm and for each announcement, we compute average straddle returns among different pairs of straddles using either equal weights or volume weights. We drop the dollar open interest weights among straddles from the same firm because the results are similar to those on volume weights.

Second, for each quarter, we average over all firms using either equal weights or dollar open interests at the stock level from the previous month end as weights. We define straddle dollar open interests in equation (3). For dollar open interest at the firm level, we sum up the dollar open interest for all straddles for the same firm from the previous month end.¹¹ We use two weighting schemes across firms for completeness. But clearly, each weighting scheme has pros and cons. The benefit of using equal weights is that it allows for all straddles to be treated equally. Given that most of our sample firms are large firms, this weighting scheme seems appropriate. But there are always potential concerns that smaller firms might have more market micro-structure biases. We discuss earlier the Blume and Stambaugh (1983) bias, and we use the closing bid-ask average price and holding period return to minimize this bias. A popular way in empirical studies to cope with the Blume and Stambaugh (1983) bias is to put more weight on firms with larger market capitalizations or more trading activity. Therefore, we use dollar open interest as weights to give

¹¹ We thank the referee for this suggestion.

more weights to larger firms and firms with more liquidity.¹² One potential drawback of this approach is that if the results are more concentrated in relatively smaller but still large firms, then the dollar open interest weighting scheme would bias the estimates downwards.

Panel A of Table 3 reports the time-series average of the straddle returns around earnings announcements. On the left, we report time-series statistics of straddle returns using equal weights across firms, and on the right, we report the straddle returns using dollar open interest weights. All t-statistics are computed using Newey and West (1987) standard errors with 3 lags.

Using equal weights across different firms and equal weights across straddles within the same firm, the holding period returns for our 5 straddle strategies range between 2.10% and 3.34%, all with highly significant t-statistics. If we use equal weight across different firms and volume weight across straddles within the same firm, the holding period returns range between 1.63% and 2.93%, again all with highly significant t-statistics. Both the pre-announcement effect and announcement effect are positive and strong, consistent with our results in Table 2. Interestingly, the magnitudes of the straddle returns computed using the time-series are slightly higher than those computed using the pooled sample.

To facilitate a more in-depth analysis of the pre-announcement effect and announcement effect, we present in Panel B of Table 3 day by day straddle returns for strategy [-3,1] and [-1,1]. The holding period return is computed for a buy and hold strategy with no rebalancing, so we compute daily returns by keeping the number of shares on calls and puts constant over the holding period.¹³ For instance, for strategy [-3,1], we first build the at-the-money straddles on day -3, and

¹² We also try to use firm market capitalization as weights. Results are similar and available upon requests.

¹³ We also compute alternative daily straddle returns, by keeping initial value weights constant throughout the holding window. The results are in the Internet Appendix Table 2. They are qualitatively similar to those in Table 3 Panel B, except that the announcement effect is much more statistically significant in Internet Appendix Table 2.

hold these straddles to construct the daily returns over the next 4 days. Daily returns over each day are reported. When we use equal weights across firms and equal weights among straddles within the same firm, for pre-announcement days, [-3,-2] and [-2,-1], the daily returns are 0.70% and 1.62%, respectively, both positive and significant; for announcement days, the [-1,0] return is 0.63%, positive and marginally significant. The [0,1] return is -0.33%, and it is insignificant. Results using volume weights across straddles within the same firm, and for strategy [-1,1] (at the bottom of the panel) are similar except that the [-1,0] return is not significant. The results suggest that the evidence for the pre-announcement effect is strong when we use equal weights to average across firms.

When we use dollar open interest as weights, the return patterns are slightly different. In the right half panel of Table 3 Panel A, when we use dollar open interest weights across different firms and equal weights across straddles within the same firm, strategy [-3,-1] has a holding period return of 1.37%, with a significant t-statistic of 3.81, indicating a strong pre-announcement effect. When we move to strategies [-3,0] and [-1,0], which partially incorporate the announcement effect, the returns become 1.10% and 0.54%, both still positive and significant, but less so than those for strategy of [-3,-1]. This indicates that the announcement effect might not be positive or significant. Results using volume weights across straddles within the same firm are similar, except that the [-3,0] and [-1,0] are less significant. Finally, for strategies [-3,1] and [-1,1], which nest both pre-announcement effects and announcement effects, the holding returns are not significantly different from zero.

Table 3 Panel B offers the daily returns using dollar open interest weights, which helps to disentangle the pre-announcement effect and announcement effect, as well as the difference between equal weights and dollar open interest weights. When we use dollar open interest across

firms and equal weight within firms, the daily return over $[-2,-1]$ is 1.11% with a t-statistic of 4.19, and the daily return over $[0,1]$ is -1.37% with a t-statistic of -3.07, while the other daily returns are insignificant. Results using dollar open interest across firms and volume weight within firms are quite similar. When we put more weight on larger firms with more trading activities, the positive pre-announcement effect is mainly driven by the return of $[-2,-1]$, and the other daily returns before announcements are also positive but less significant. For the announcement effect over days $[-1,0]$ and $[0,1]$, we have mixed signs and mixed significance. Our earlier results in Table 2 Panel A show that the daily returns of at-the-money delta-neutral straddles formed on a daily basis are negative and significant on average. In comparison with daily returns in Table 2 Panel A, the announcement effect may be reflected by the less negative or positive but insignificant returns in the event days relative to the significantly negative returns in the non-event days.

Are the average positive returns on straddles driven by a special time period or outliers in the time series data? To answer this question, Figure 2 Panel A plots the time-series of returns for delta-neutral straddles using the $[-3,-1]$ and $[-3,0]$ window over the past 18 years, using equal weights across firms. It is evident from the plot that most of the time, the delta-neutral straddle returns are positive, which implies that the significant positive returns are not driven by any particular period. Meanwhile, we notice interesting time variation patterns in the straddle returns. For instance, straddle returns are relatively low around 2001 and 2008, which coincide with market downturns.¹⁴ We also plot the time-series of returns for delta-neutral straddles using the $[-3,-1]$ and $[-3,0]$ window over the past 18 years in Panel B of Figure 2, using dollar open interest weight across firms. The strategy $[-3,-1]$ focuses on the pre-announcement effect, and the return is positive

¹⁴ The earnings calendar has become more popular in recent years. There is a concern that the positive straddle returns are correlated with the popularity of the earnings calendar, which makes information regarding earnings announcement days more accessible. The time-series results show that the positive straddle returns have not become larger for the most recent years, which fails to support the earnings calendar popularity notion.

and large 74% of the time. When the announcement effect is combined with the pre-announcement effect in strategy [-3,0], the returns become more volatile and are positive 55% of the time. To summarize, over the pre-announcement period, the positive straddle returns are significant over both weighting schemes, and over the whole sample period. But for the announcement period, the straddle returns are positive and significant for the equal weighted results rather than the dollar open interest weight results. Given that neither the pre-announcement effect nor the announcement effect has been documented in previous literature, our findings make significant contributions to the area.¹⁵

To summarize the empirical findings in this section, we document significantly positive straddle returns around earnings announcements. This finding is robust over time, to different ways of constructing straddle returns. Between the pre-announcement effect and announcement effect, the pre-announcement effect is always positive and significant, while the announcement effect is mostly positive, but can be negative. Our results are not driven by surprise events like unscheduled earnings announcements. The general positive straddle returns around earnings announcements imply that the straddle prices before earnings announcements might be too low. In other words, there is substantial underestimation of uncertainty before earnings announcements.¹⁶

¹⁵ As discussed earlier, different weighting schemes have their own pros and cons. Results based on the equal weights allow us to better examine the patterns among all the firms with listed options, while results based on the dollar open interest weights reduce concerns regarding market microstructure noise.

¹⁶ We conduct substantial robustness checks, along the dimension of industries, stock characteristics and option characteristics. Portfolio sorting results are presented in the Internet Appendix Table 3 and 4. Results using Fama-MacBeth WLS regression framework are reported in the Internet Appendix Table 5. In general, our main conclusion that the pre-announcement effect is positive and significant is supported by our robustness checks.

IV. What Drives Positive Straddle Returns around Earnings Announcements?

We propose different hypotheses/explanations in Section IV.A for the positive straddle returns around earnings announcements. In Section IV.B, using selected past option and stock characteristics, we form portfolios of straddles to examine the hypotheses in Section IV.A. In Section IV.C, we predict straddle returns around earnings announcements with characteristics implied by these hypotheses, using the Fama-MacBeth regressions.

A. Our Hypothesis

The finding of positive straddle returns around earnings announcement days is in sharp contrast to the negative average straddle returns computed over all trading days. Given that straddles have positive exposures to market volatility risk and market jump risk, which are both negatively priced, it is reasonable to expect straddles to manifest the exposures through negative returns on average. However, we document the opposite effect, where straddle returns around earnings announcement days are positive. Based on the above reasoning, we first rule out the risk story as the reason for positive straddle returns around earnings announcements.

Prior to earnings announcements, as investors start to notice the upcoming earnings announcements, they might expect (at least from historical evidence) that both range-based volatility and implied volatility would first increase and then decrease. If participants in option markets form rational expectations of the dynamics of uncertainty around an earnings announcement based on historical patterns, then buying delta-neutral straddles right before an earnings announcement should not deliver any nonzero abnormal returns. The positive straddle returns imply that the straddle prices before an earnings announcement might be too low. Stated differently, there is substantial underestimation of uncertainty before earnings announcements. It is even more intriguing that the pattern of underestimation persists year after year.

What mechanism is behind the persistent underestimation of uncertainties? We believe the existence and the degree of under-estimation of uncertainty could be affected by several different channels: an investor's ability to estimate uncertainty embedded in rare events or jump events depends on the noisiness of past information signals; the cost of trading relevant information into prices; and an investor's ambiguity aversion.

Earnings announcements do not happen on a daily basis, and many times the return process experiences jumps around earnings announcement dates. To begin with, it is difficult for the investor to precisely estimate uncertainty around the earnings announcement periods. It is conceivable that the estimation of future uncertainty would be less precise, if there are noisier firm level signals. That is, the underestimation of uncertainty and positive straddle returns would be more pronounced for firms with noisier signals. Meanwhile, when the market is illiquid or when the transaction cost is too high, it would be challenging to incorporate "correct" information about firm level uncertainty into option prices. That is, the underestimation of uncertainty would be larger for firms with higher transaction costs for either the underlying stocks or options or both. The above two mechanisms are not mutually exclusive, and it might well be the case that both of them are the drivers for the positive straddle returns around earnings announcements.

Alternatively, if investors have ambiguity-averse preferences, this ambiguity aversion might cause these investors to stay away from trading options with upcoming earnings announcements (similar to portfolio inertia in Illeditsch (2011)). Consequently, prices fail to fully incorporate investors' expectation of uncertainty, which leads to abnormal straddle returns. In Panel C of Figure 1, we plot the average option trading volumes around earnings announcement dates. We first compute each stock's option trading volumes using both calls and puts, and then we report the mean across all stocks over day -30 to day 30. Evidently, option trading volume

spikes between day -3 and day 2 around earnings announcements. If the ambiguity aversion hypothesis is true, or if the ambiguity averse investors dominate in the options market, we should not observe higher option trading volumes around earnings announcements, because ambiguity averse investors would avoid trading options during the earnings announcement period. This hypothesis opposes our findings of higher trading volumes, as seen in Figure 1 Panel C. This makes the ambiguity aversion argument less likely.

B. Straddle Portfolio Returns in Cross Section

In this section, we investigate the straddle returns in the cross section to understand whether the noisiness of signals and transaction costs help to explain the positive straddle returns around earnings announcements. Meanwhile, the cross-sectional study allows us to examine whether the positive straddle returns documented in the previous section are robust across different firm and option characteristics. In this section, we focus on the window of [-3,0] and present 3-day holding period returns and t-statistics on delta-neutral straddles with equal weighting across firms. To be conservative, we use volume weighting at firm level whenever there are more than one at-the-money straddles.

To examine patterns in the cross-section, we follow a portfolio sorting procedure. For every quarter, we sort all firms into 4 groups, based on noisiness of signals or transaction cost measures, observed at the end of the previous quarter. We average firm level straddle returns for the current quarter for each of the four groups, with equal weight within the group.¹⁷ The means and t-statistics

¹⁷ In the preceding sections, we examine 5 straddle strategies over various windows around earnings announcements. When we use equal weight across firms, results over various windows are all positive and significant. For brevity, going forward, we focus on delta-neutral straddles over the window of [-3,0], using equal weighting across firms and volume weighting across straddles within the same firm. We report these results in Table 4. When we use dollar open interest weighting across firms, results over the pre-announcement period [-3,-1] are positive and significant. Therefore, we examine results using dollar open interest weights across firms over the window of [-3,-1]. We report these results in Internet Appendix Table 6.

for straddle returns within each group are computed over 72 quarters for each of the four groups. All t-statistics are computed using standard errors with Newey and West (1987) adjustments with 3 lags. Our hypothesis suggests the degree of uncertainty under-estimation (positive straddle returns) would be related to the noisiness of firm level signals and/or transaction costs. If that is the case, sorting on noise measures and transaction cost measures would lead to significant straddle return differences. In terms of direction, both noisier signals and higher transaction costs would lead to higher straddle returns.

We collect the following measures for noisiness in the stock return process and earnings process. For the stock return process, we compute historical higher moments: VOLATILITY, SKEWNESS and KURTOSIS, using the past three-month daily return data. We also compute historical jump frequency, JUMP_FREQ, and historical jump size, JUMP_SIZE. We follow the Lee and Mykland (2008) procedure, and use one year of daily returns data to extract the jump process for each firm in our sample. Presumably, it is more difficult for investors to make precise estimates of uncertainty around earnings announcements for firms with larger high moments, more frequent jumps, or larger jumps. Therefore, we expect that firms with larger high moments and jumps to have higher positive straddle returns around earnings announcements.

The results are presented in Panel A of Table 4. For firms with the lowest and highest historical volatility, the straddle returns are 1.85% and 4.19%, respectively. For firms with the lowest and highest historical skewness, the straddle returns are 2.44% and 4.28%, respectively. For firms with the lowest and highest historical kurtosis, the straddle returns are 1.53% and 4.27%, respectively. Evidently, larger historical moments do increase the difficulty of correctly estimating uncertainty around earnings announcements. Of the three moments, the difference between the high and low is significant for all three. For the jump frequency measure, firms with the lowest

and highest jump frequency have average straddle returns of 2.55% and 3.57%, respectively. The difference is 1.02%, with a t-statistic of 1.37. For the jump size measure, firms with the smallest and largest jump size have average straddle returns of 3.10% and 3.33%, respectively, and the difference is not statistically significant. The evidence from using jump measures is weaker than that of historical higher moments.

Since our straddles are constructed during earnings announcement periods, an interesting question is whether investors learn from past earnings surprises about the size of uncertainty and make correct inferences afterwards. Obviously, this depends on the precision of the signal received from previous earnings announcements. If the information from previous earnings announcements contains more noise, it would be more difficult to correctly estimate the magnitude of uncertainty. In other words, the question we examine in Panel B is whether underestimation of uncertainty is more pronounced for firms with larger and noisier earnings surprises in the past.

We start by considering the number of analysts as a proxy for the overall quality of the information environment, assuming that firms with more analyst coverage tend to have more transparent information environments. We obtain the number of analysts following each firm from IBES. The average straddle returns for firms with the lowest and highest number of analysts are 4.67% and 2.12%, respectively. The difference between the two groups is -2.55% with a significant t-statistic of -3.35. This supports the notion that with more analysts comes a less noisy signal, and fewer options investors underestimating the uncertainty around an earnings announcement.¹⁸

¹⁸ From unreported results, we also examine how institutional ownership affects straddle returns. We find straddle returns across different levels of institutional ownership are always positive and significant. But there does not exist a clear cross-sectional pattern.

There are many ways to measure earnings surprises. One conventional measure is the standardized difference between the announced earnings and the analyst forecast consensus scaled by analyst forecast dispersion, which is our main “SUE” measure.¹⁹ A more direct surprise measure for investors is the cumulative return over the earnings announcement period, because the return only responds to “true surprises”. Therefore, we compute cumulative abnormal return, CAR, over [-1,1] after adjusting for size and book-to-market characteristics using Fama-French 6 benchmark portfolio returns over the same period. To measure the magnitude of surprises, rather than the direction of surprises, we use the absolute value of the SUE and CAR. For historical uncertainty in earnings surprises, we compute the SUE and CAR variances, using the previous 8 quarters.

For firms with the lowest and highest previous quarter earnings announcement surprise, |SUE|, the average straddle returns are 2.49% and 3.80%, respectively. The difference is 1.31%, with a t-statistic of 1.89. For firms with the lowest and highest |CAR| over earnings announcements, the average straddle returns are 1.83% and 4.27%, respectively. The difference is 2.44% with a significant t-statistic of 4.71. The above patterns support the hypothesis that larger historical surprises result in more under-estimation of uncertainty. Next, we turn to the variance measure of earnings surprises. For firms with the lowest and highest variance of earnings announcement surprises, the average straddle returns are 2.11% and 3.25%, respectively. The difference is 1.13% with an insignificant t-statistic of 1.37. For firms with the lowest and highest variance of CAR, the average straddle returns are 1.12% and 3.95%, respectively. The difference is 2.84% with a highly significant t-statistic of 4.47.

¹⁹ From results not reported, we also compute earnings surprises using a random walk model and seasonality model. The results are similar to those using consensus forecasts.

The above panels present strong evidence that firms with noisier signals in past returns and earnings announcements are more likely to produce future higher straddle returns around earnings announcements.

We also examine variables related to transaction costs in the options and stock market. If transaction costs are too high or liquidity is too low, the option prices might not be able to reflect “correct” expected uncertainty in a timely way, which means higher positive straddle returns. For transaction costs measures, we directly compute bid-ask spreads scaled by closing prices for stocks and options from the previous quarter. We use average volumes for stocks and options previous quarter as a liquidity proxy. The results are presented in Panel C of Table 4. When we sort on stock bid-ask spread, the firms with the lowest and highest spread have straddle returns of 2.21% and 3.29%, respectively, and the difference between the two is 1.08%, with a t-statistic of 1.84. When we sort on stock trading volume, the firms with the lowest volume and highest volume have straddle returns of 5.83% and 1.33%, respectively, and the difference is -4.50% with a t-statistic of -4.95. Evidently, straddle returns tend to be more positive for stocks with a higher spread and lower volume, which supports our hypothesis. When we turn to option bid-ask spread and option trading volume, the same pattern persists, and becomes even stronger. For options with the lowest and highest bid-ask spreads, the straddle returns are 1.14% and 4.93%, respectively, and the difference is 3.79% with a t-statistic of 5.33. For options with the lowest and highest volumes, the straddle return is 5.82% and 0.90%, and the difference is -4.92% with a t-statistic of -5.42.

The results in Panel C further support the hypothesis that as transaction costs increase, it becomes more difficult to incorporate information into option prices, which leads to a higher propensity to under-estimate uncertainty resulting in higher straddle returns.²⁰

To summarize the findings in this section, firms with noisier signals in past returns and earnings announcements are more likely to produce higher future straddle returns before an earnings announcement. Also, when transaction costs increase and when volumes decrease, there is more underestimation of uncertainty and higher straddle returns. This echoes our earlier finding in Table 3 that the results are stronger when we use equal weights across firms, and when we use dollar open interest weights with lower weights on smaller firms, results are weaker, mainly because the positive straddles are more pronounced for smaller firms, which tend to have lower volumes and higher spreads.

C. Fama-MacBeth Regression: What Predicts Straddle Returns Around Earnings Announcements?

In the preceding sections, we compute average straddle returns at the portfolio level. We find average straddle returns are positive and significant, and firm characteristics related to noisiness of signals and transaction costs both help to predict the straddle returns. However, it is unclear from the results presented to this point which characteristic dominates the other. It is hard to address this issue using a single-sort portfolio approach. In this section, we use the Fama-

²⁰ Alternative results using dollar open interest weighting across firms and over [-3,-1] are reported in Internet Appendix Table 6. The straddle returns are positive and statistically significant for most of the sorted portfolios, but the overall statistical significance is lower than those in Table 4. In terms of high moments and jumps, we find kurtosis measure generates a significant return difference, similar but weaker than those in Table 4. Among the past earnings surprises measures, only the number of analyst measure generates a marginally significant negative return difference, much less significant than those in Table 4. For the transaction cost variables, 3 out of 4 volume and spread variables generate significant return differences, similar to those in Table 4. We conduct many other robustness checks using different windows and different weighting schemes. The results are available on request.

MacBeth regression approach to directly examine whether individual straddle returns can be predicted by past information and to determine which component of the past information has the strongest predictive power. In particular, for each quarter, we estimate a cross-sectional predictive regression for individual straddle returns. Then, we average all quarterly coefficients over 72 quarters to obtain the mean coefficient estimates and conduct inferences. Our t-statistics are computed using standard errors with Newey and West (1987) adjustments with 3 lags. In this section, we only report results for delta-neutral straddles, held over the [-3,0] window.²¹ Results for different windows are both qualitatively and quantitatively similar and are available upon request.

We estimate six regressions. We use the first regression to set up the benchmark, in which we include the following five basic characteristics: days to maturity, moneyness, size, book-to-market ratio and past 12-month returns. In the second regression, we include noisiness measures computed from historical returns: stock return kurtosis, jump frequency and jump size. We do not include historical volatility or skewness because they are highly correlated with kurtosis. In the third regression, we use noisiness measures computed from earnings data, and they are: number of analysts, variance of CAR and variance of SUE. We do not include $|CAR|$ and $|SUE|$ because they are highly correlated with the variances of CAR and SUE, respectively. In the fourth regression, we focus on transaction cost measures, such as historical option trading volume, option bid-ask spread and stock bid-ask spread. The above four regressions help to clarify whether each category of information is relevant for the straddle returns. In the fifth regression, we take a “kitchen sink” approach and pool all variables together. Clearly, the “kitchen sink” approach might suffer from the collinearity concerns. Therefore, in the final regression, we apply a model selection tool to find

²¹ We also estimate results for the window [-3,-1], and they are even stronger than those for the window [-3,0].

out which variables have the strongest predictive power among all variables, which also reduces the “kitchen sink” model to a parsimonious model.

Regression results are reported in Table 5. In the first regression, the coefficient on size is negative. This finding suggests that the straddle returns would be more positive for smaller firms. The reason could be that the small firms have noisier signals and/or small firms have higher transaction costs. The coefficient on moneyness is positive and significant, suggesting that uncertainty is more pronounced for straddles relatively more in the money. The adjusted R^2 is 1.29%.

In the second regression, we examine higher historical moments and jump statistics. Consistent with Table 4, higher historical moments and higher jump statistics all carry positive signs, indicating that the positive straddle returns are larger for firms with more noise in their returns. But the only significant coefficient in this regression is on log kurtosis. The adjusted R^2 is only 0.29%, substantially lower than the first regression.

The third regression only includes historical earnings information. The coefficient on the number of analysts is significantly negative, which suggests that when there are fewer analysts following the firm, the straddle returns around earnings announcements become larger. The coefficient on variance of CAR is significantly positive, suggesting that the straddle return increases with historical uncertainty. The coefficients on variance of SUE is insignificant. The adjusted R^2 is now 0.42%, lower than that of the first regression, but higher than that of the second regression using high historical return moments.

In the fourth regression, we include transaction cost measures such as option volumes and bid-ask spreads. We do not include stock volume because it is correlated with option volume at 76%. The option volume coefficient is negative but insignificant. Both spread variables are

positive and significant, indicating that higher transaction costs lead to higher future positive straddle returns, which is consistent with our hypothesis that under-estimation could be driven by higher transaction costs.

The “kitchen sink” regression in column V combines all variables from the first four regressions. All measures are insignificant except for moneyness and option bid-ask spread. This is probably because, as a measure of transaction cost, option bid-ask spread is related to firm characteristics including size and historical signal noisiness. The adjusted R^2 becomes 2.06%.

In the final regression, to alleviate concerns regarding multicollinearity, we rely on a variable reduction technique based on Hendry and Krolzig’s (2001) PcGets algorithm. We start with a regression including all explanatory variables, and we remove the explanatory variable with the lowest absolute t-statistic. Then we re-estimate the regression with the rest of the variables. We repeat these steps until all the variables left in the regression have a p-value above 10%.

With this procedure, we select 4 highly significant explanatory variables. The coefficient on moneyness is positive and significant. Variable kurtosis, variance of CAR, and option bid-ask spread all positively predict straddle returns, suggesting that signal noisiness and transaction costs both play significant role in predicting straddle returns. Size is dropped in the model reduction procedure because it contains information that is jointly captured by the noisiness and transaction costs measures. The adjusted R^2 is 1.46%.

To summarize the findings in this section, moneyness, size, historical moments, variance of CAR, and transaction costs all help to predict straddle returns around earnings announcement days.

V. Conclusion

How investors form their expectations of uncertainty has been one of the central themes in academic research in the discipline of finance. In this paper, we use firm earnings announcements as a special event to study investors' perceptions of firms' fundamental uncertainty. We construct delta-neutral straddles three days or one day prior to scheduled earnings announcement dates and hold the straddles until the day of or one day after the earnings announcement dates. The straddle returns around earnings announcements are significantly positive, especially for the pre-announcement period. This is in stark contrast to the significantly negative straddle returns on individual stocks during normal periods. We also find that the positive straddle returns around earnings announcements are higher for smaller firms, firms with higher past return volatility, firms with higher and more volatile past earnings surprises, and firms with higher transaction costs.

Positive straddle returns are inconsistent with a risk-based explanation by virtue of the fact that straddles are positively exposed to market volatility risk, which is negatively priced. Using a subsample with expected earnings announcement days, we find that it is unlikely that our results are driven by unscheduled announcements. From the cross-sectional evidence, the positive straddle returns are stronger for firms with a less transparent information environment or noisier signals, as well as for firms with higher transaction costs. That is, when it is more difficult or costly to acquire and process information about the firm, there is more underestimation of uncertainty, which leads to higher positive straddle returns.

The main focus of this paper is to document investors' anticipation of uncertainty around earnings announcements rather than to search for a profitable trading strategy. As a result, we only use end of the day bid and ask prices. For future research, with intraday data, it would be interesting to know whether there are tradable strategies on straddles around earnings announcement days.

Reference

Ahn, D.; S. Choi, D. Gale; and S. Kariv. "Estimating Ambiguity Aversion in a Portfolio Choice Experiment." *Quantitative Economics*, 5 (2014), 195-223.

Amin, K., J. Coval and H. N. Seyhun. "Index Option Prices and Stock Market Momentum." *Journal of Business*, 77 (2004), 835-874.

Amin, K., and C. Lee. "Option Trading, Price Discovery, and Earnings News Dissemination." *Contemporary Accounting Research*, 14 (1997), 153-192.

Alizadeh, S.; M. W. Brandt; and F. X. Diebold. "Range-Based Estimation of Stochastic Volatility Models." *Journal of Finance*, 57 (2002), 1047-1091.

Bagnoli, M.; W. Kross; and S. G. Watts. "The Information in Management's Expected Earnings Report Date: a Day Late, a Penny Short." *Journal of Accounting Research*, 40 (2002), 1275-1296.

Barberis, N., and M. Huang. "Mental Accounting, Loss Aversion, and Individual Stock Returns." *Journal of Finance*, 56 (2001), 1247-1292.

Barberis, N.; A. Shleifer; and R. Vishny. "A Model of Investor Sentiment." *Journal of Financial Economics*, 49 (1998), 307-343.

Battalio, R.; B. Hatch; and R. Jennings. "All Else Equal? A Multidimensional Analysis of Retail, Market Order Execution Quality." *Journal of Financial Markets*, 6 (2003), 143-162.

Begley, J., and P. E. Fischer. "Is There Information in an Earnings Announcement Delay?" *Review of Accounting Studies*, 3 (1998), 347-363.

Berkman, H., and C. Truong. "Event Day 0? After-Hours Earnings Announcements." *Journal of Accounting Research*, 47 (2009), 71-103.

Bernard, V. L., and J. K. Thomas. "Post-Earnings-Announcement Drift: Delayed Price Response or Risk Premium?" *Journal of Accounting Research* (1989), 1-36.

Black, F., and M. Scholes. "The Pricing of Options and Corporate Liabilities." *Journal of Political Economy*, 81 (1973), 637-654.

Blume, M. E., and R. F. Stambaugh. "Biases in Computed Returns: an Application to the Size Effect." *Journal of Financial Economics*, 12 (1983), 387-404.

Bollen, N., and R. E. Whaley. "Does Net Buying Pressure Affect the Shape of Implied Volatility Functions?" *Journal of Finance*, 59 (2004), 711-753.

Bondarenko, O. "Why Are Put Options So Expensive?" *Quarterly Journal of Finance*, 4 (2014).

Bossaerts, P.; P. Ghirardato; S. Guarnaschelli; and W. R. Zame. "Ambiguity in Asset Markets: Theory and Experiment." *Review of Financial Studies*, 23 (2010), 1325-1359.

Burgstahler, D., and I. Dichev. "Earnings Management to Avoid Earnings Decreases and Losses." *Journal of Accounting and Economics*, 24 (1997), 99-126.

Chae, J. "Trading Volume, Information Asymmetry, and Timing Information." *Journal of Finance*, 60 (2005), 413-442.

Chambers, A. E., and S. H. Penman. "Timeliness of Reporting and the Stock Price Reaction to Earnings Announcements." *Journal of Accounting Research* (1984), 21-47.

Cohen, D. A.; A. Dey; T. Z. Lys; and S. V. Sunder. "Earnings Announcement Premia and the Limits to Arbitrage." *Journal of Accounting and Economics*, 43 (2007), 153-180.

Coval, J. D., and T. Shumway. "Expected Option Returns." *Journal of Finance*, 56 (2001), 983-1009.

Cremers, M.; M. Halling; and D. Weinbaum. "Aggregate Jump and Volatility Risk in the Cross-Section of Stock Returns." *Journal of Finance*, 70 (2015), 577-614.

De Fontnouvelle, P.; R. P.H. Fische; and J. H. Harris. "The Behavior of Bid-Ask Spreads and Volume in Options Markets during the Competition for Listings in 1999." *Journal of Finance*, 58 (2003), 2437-2463.

De Long, J. B.; A. Shleifer; L. H. Summers; and R. J. Waldmann. "Noise Trader Risk in Financial Markets." *Journal of Political Economy*, 98 (1990), 703-738.

Johannes, M., and A. Dubinsky. "Earnings Announcements and Equity Options." Working Paper, (2006).

Lamont, O., and A. Frazzini. "The Earnings Announcement Premium and Trading Volume." NBER Working Paper, (2007).

Fama, E. F., and K. R. French. "Common Risk Factors in the Returns on Stocks and Bonds." *Journal of Financial Economics*, 33 (1993), 3-56.

Figlewski, S. "Options Arbitrage in Imperfect Markets." *Journal of Finance*, 44 (1989), 1289-1311.

Garleanu, N.; L. H. Pedersen; and A. M. Poteshman. "Demand-Based Option Pricing." *the Review of Financial Studies*, 22 (2009), 4259-4299.

Givoly, D., and D. Palmon. "Timeliness of Annual Earnings Announcements: Some Empirical Evidence." *Accounting Review* (1982), 486-508.

Goyal, A., and A. Saretto. "Cross-Section of Option Returns and Volatility." *Journal of Financial Economics*, 94 (2009), 310-326.

Govindaraj, S.; S. Liu; and J. Livnat. "The Post Earnings Announcement Drift and Option Traders." Working Paper, New York University (2012).

Grossman, S. J. "An Analysis of the Implications for Stock and Futures Price Volatility of Program Trading and Dynamic Hedging Strategies." *Journal of Business*, 61 (1988).

Hendry, D. F., and H. M. Krolzig. "Automatic Economic Model Selection Using PcGets 1.0." Timberlake Consultants (2001).

Hilbert, M. "Toward a Synthesis of Cognitive Biases: How Noisy Information Processing Can Bias Human Decision Making." *Psychological Bulletin*, 138 (2012).

Hong, H., and J. C. Stein. "A Unified Theory of Underreaction, Momentum Trading, and Overreaction in Asset Markets." *Journal of Finance*, 54 (1999), 2143-2184.

Illeditsch, P. K. "Ambiguous Information, Portfolio Inertia, and Excess Volatility." *Journal of Finance*, 66 (2011), 2213-2247.

Lee, S. S., and P. A. Mykland. "Jumps in Financial Markets: a New Nonparametric Test and Jump Dynamics." *Review of Financial Studies*, 21 (2007), 2535-2563.

Lemmon, M., and S. Ni. "Differences in Trading and Pricing between Stock and Index Options." *Management Science*, 60 (2014), 1985-2001.

Lakonishok, J.; I. Lee; N. D. Pearson; and A. M. Poteshman. "Option Market Activity." *Review of Financial Studies*, 20 (2006), 813-857.

Lo, A. W., and J. Wang. "Implementing Option Pricing Models When Asset Returns Are Predictable." *Journal of Finance*, 50 (1995), 87-129.

Mayhew, S. "Competition, Market Structure, and Bid-Ask Spreads in Stock Option Markets." *Journal of Finance*, 57 (2002), 931-958.

Merton, R. C. "A Simple Model of Capital Market Equilibrium with Incomplete Information." *Journal of Finance*, 42 (1987), 483-510.

Newey, W. K., and K. D. West. "A Simple, Positive Semi-Definite, Heteroskedasticity and Autocorrelation Consistent Covariance Matrix." *Econometrica*, 55 (1987), 703-708.

Pan, J., and A. M. Poteshman. "The Information in Option Volume for Future Stock Prices." *Review of Financial Studies*, 19 (2006), 871-908.

Patell, J. M., and M. A. Wolfson. "Anticipated Information Releases Reflected in Call Option Prices." *Journal of Accounting and Economics*, 1 (1979), 117-140.

Poteshman, A. M. "Underreaction, Overreaction, and Increasing Misreaction to Information in the Options Market." *Journal of Finance*, 56 (2001), 851-876.

Sarkar, A., and R. A. Schwartz. "Market Sidedness: Insights into Motives for Trade Initiation." *Journal of Finance*, 64 (2009), 375-423.

Shleifer, A., and R. W. Vishny. "The Limits of Arbitrage." *Journal of Finance*, 52 (1997), 35-55.

Skinner, D. J. "Why Firms Voluntarily Disclose Bad News." *Journal of Accounting Research*, 32 (1994), 38-60.

Stein, J. "Overreactions in the Options Market." *Journal of Finance*, 44 (1989), 1011-1023.

Jin, W.; J. Livnat; and Y. Zhang. "Option Prices Leading Equity Prices: Do Option Traders Have an Information Advantage?" *Journal of Accounting Research*, 50 (2012), 401-432.

Xing, Y.; X. Zhang; and R. Zhao. "What Does the Individual Option Volatility Smirk Tell Us About Future Equity Returns?" *Journal of Financial and Quantitative Analysis*, 45 (2010), 641-662.

Table 1. Summary Statistics on Options and Stocks

Our sample period is from January 1996 to December 2013. We obtain data from several data sources. Data on stock returns and firm characteristics, accounting data, and earnings announcements are obtained from CRSP, COMPUSTAT, and IBES, respectively. Data on options is from Option Metrics. We apply filter (1) to (9) to the options data. Moneyiness is defined as stock price divided by strike price. We compute open interest for a straddle as the number of contracts outstanding in 100's, summing open interests from both calls and puts in the straddle. Similarly, we compute the daily volume of a straddle as the number of contracts traded in 100's, summing daily volumes from both calls and puts in the straddle. Implied volatility for a straddle is the average of implied volatility of calls and puts in the straddle. The panels below report summary statistics on stock and straddle characteristics, which are computed over a pooled sample across firm/straddle and across time.

Panel A. Stock characteristics

	N	Mean	Median	Std
Market cap (\$ mil)	41940	10597	2297	30434
Book to market ratio	41232	0.470	0.356	0.537
Past 12 month return	41940	0.113	0.120	0.461
Past 3 month daily return volatility (annualized)	41940	0.431	0.378	0.231
Past 3 month daily return skewness	41940	0.052	0.082	1.097
Past 3 month daily return kurtosis	41940	5.565	3.877	5.065

Panel B. Straddle characteristics

	N	Mean	Median	Std
Moneyiness	76848	1.011	1.008	0.028
Days to maturity	76848	38	37	13
Open interest	76848	2431	474	7375
Volume	76848	401	26	1800
Implied volatility	76848	0.474	0.435	0.206

Table 2. Delta-Neutral Straddle Returns, Pooled Sample

Our sample is from January 1996 to December 2013. Data on options is from Option Metrics. We apply filter (1) to (8) to the options data in Panel A, and filter (1) to (9) to the remaining panels. Panel A reports daily, weekly and monthly returns on all at-the-money delta-neutral straddles. Panels B to D report returns on at-the-money delta-neutral straddles over different windows around earnings announcements, where day 0 is the earnings announcement day. Panel B reports all straddles in our sample. Panels C and D report results on straddles with expected earnings announcement days which coincide with actual announcement days, following an approach outlined by Givoly and Palmon (1982) and extended by Cohen (2007), respectively. In the event that a stock has more than one pair of at-the-money straddles, we use equal weight, volume weight or dollar open interest weight straddles at the stock level. The mean holding period return is computed by pooling across firms and across time. All t-statistics are computed using standard errors clustered by date.

Panel A. All Delta-Neutral Straddles

Holding Period	Equally Weighted		Volume Weighted		Dollar Open Weighted	
	Holding Ret	t-stat	Holding Ret	t-stat	Holding Ret	t-stat
1 day	-0.19%	-5.11	-0.14%	-3.36	-0.20%	-5.30
1 week	-2.12%	-11.92	-2.11%	-10.62	-2.12%	-11.93
1 month	-17.09%	-26.82	-16.19%	-23.35	-17.37%	-26.83

Panel B. At-the-Money Delta-Neutral Straddles around Earnings Announcements

Holding Period	Equally Weighted		Volume Weighted		Dollar Open Weighted	
	Holding Ret	t-stat	Holding Ret	t-stat	Holding Ret	t-stat
[-3,-1]	1.90%	16.35	2.18%	16.47	1.95%	16.74
[-3,0]	2.60%	13.92	2.36%	11.28	2.57%	13.76
[-3,1]	1.98%	8.55	1.13%	4.51	1.88%	8.00
[-1,0]	1.88%	16.36	1.55%	11.43	1.86%	15.41
[-1,1]	2.43%	13.39	1.52%	7.37	2.36%	12.22

Panel C. Givoly and Palmon's Sample, At-the-Money Delta-Neutral Straddles around Earnings Announcements

Holding Period	Equally Weighted		Volume Weighted		Dollar Open Weighted	
	Holding Ret	t-stat	Holding Ret	t-stat	Holding Ret	t-stat
[-3,-1]	1.90%	12.94	2.22%	12.95	1.82%	13.11
[-3,0]	2.57%	10.81	2.37%	8.58	3.11%	10.46
[-3,1]	2.03%	6.70	1.42%	4.22	2.84%	6.23
[-1,0]	1.90%	11.71	1.50%	7.89	2.55%	11.01
[-1,1]	2.54%	10.13	1.68%	5.87	3.49%	9.47

Panel D. Cohen's Sample, At-the-Money Delta-Neutral Straddles around Earnings Announcements

Holding Period	Equally Weighted		Volume Weighted		Dollar Open Weighted	
	Holding Ret	t-stat	Holding Ret	t-stat	Holding Ret	t-stat
[-3,-1]	2.04%	11.07	2.10%	10.24	2.10%	11.18
[-3,0]	2.58%	8.45	2.35%	6.58	2.59%	8.38
[-3,1]	1.41%	4.07	0.55%	1.51	1.44%	3.84
[-1,0]	1.44%	7.20	1.03%	4.47	1.42%	6.64
[-1,1]	1.69%	5.20	0.85%	2.25	1.68%	4.54

Table 3. Delta-Neutral Straddle Returns, Time-Series Sample

Our sample is from January 1996 to December 2013. Data on options is from Option Metrics. We apply filter (1) to (10) to the options data. Panel A and B reports time series average returns on at-the-money delta-neutral straddles over different windows around earnings announcements, where day 0 is the earnings announcement day. In this table, we further require a non-missing daily price, positive daily open interest, and positive daily volume in each strategy window so that the strategy window returns and day-by-day returns are directly comparable. In the event that a stock has more than one pair of at-the-money straddles, we use equal weight or volume weight for different straddle pairs for the same stock. To aggregate across stocks, we use either equal weights or use last month dollar open interest as weights across different firms. To compute time series average returns, we first compute the quarterly average return across firms, and then we average over all quarters. We compute t-statistics using Newey-West standard errors with 3 lags.

Panel A. At-the-Money Delta-Neutral Straddles

Weighting		Equal		Equal		Dollar Open		Dollar Open	
Across Firms	Equal		Equal		Dollar Open		Dollar Open		
Within Firms	Equal		Volume		Equal		Volume		
Holding Period	Holding Ret	t-stat	Holding Ret	t-stat	Holding Ret	t-stat	Holding Ret	t-stat	
[-3,-1]	2.62%	9.67	2.59%	9.70	1.37%	3.81	1.47%	4.15	
[-3,0]	3.34%	6.71	2.93%	5.84	1.10%	2.00	1.01%	1.87	
[-3,1]	2.10%	2.99	1.63%	2.30	-0.67%	-1.06	-0.87%	-1.39	
[-1,0]	2.59%	7.44	2.30%	6.31	0.54%	1.78	0.49%	1.51	
[-1,1]	2.85%	4.60	2.34%	3.60	0.15%	0.30	0.08%	0.16	

Panel B. Day by Day Returns on At-the-Money Delta Neutral Straddles

Weighting		Equal		Equal		Dollar Open		Dollar Open	
Across Firms	Equal		Equal		Dollar Open		Dollar Open		
Within Firms	Equal		Volume		Equal		Volume		
Holding Period	Day	Holding Ret	t-stat	Holding Ret	t-stat	Holding Ret	t-stat	Holding Ret	t-stat
[-3,1]	[-3,-2]	0.70%	5.36	0.65%	4.65	0.21%	1.38	0.22%	1.50
	[-2,-1]	1.62%	10.27	1.58%	9.35	1.11%	4.19	1.15%	4.46
	[-1,0]	0.63%	1.77	0.37%	1.04	-0.29%	-0.80	-0.42%	-1.17
[-1,1]	[0,1]	-0.33%	-1.04	-0.47%	-1.43	-1.37%	-3.07	-1.50%	-3.33
	[-1,0]	2.13%	6.07	1.88%	5.04	0.43%	1.39	0.40%	1.20
	[0,1]	0.84%	2.89	0.60%	1.93	-0.25%	-0.70	-0.28%	-0.71

Table 4. Noise and Transaction Costs, Delta-Neutral Straddle Returns over [-3,0], Time-Series Sample, Equal Weight across Firms

Our sample is from January 1996 to December 2013. Data on options is from Option Metrics. We apply filter (1) to (10) to the options data. Straddles are computed over [-3,0], relative to earnings announcement days. In the event that a stock has more than one pair of short term at-the-money straddles, we adopt volume weighting. Each quarter, we sort all firms into 4 groups based on previous period characteristics, and we average firm-level straddle returns for each of the four groups using equal weights. The means and t-statistics for each group are computed over 72 quarters. We compute t-statistics using Newey-West standard errors with 3 lags.

Panel A. Sort on Past High Moments and Jumps

	VOLATILITY		SKEWNESS		KURTOSIS		JUMP_FREQ		JUMP_SIZE	
	Holding Ret	t-stat	Holding Ret	t-stat	Holding Ret	t-stat	Holding Ret	t-stat	Holding Ret	t-stat
low	1.85%	2.95	2.44%	4.48	1.53%	3.18	2.55%	4.16	3.10%	5.38
2	3.27%	4.98	2.80%	4.57	3.30%	4.72	2.45%	3.80	3.00%	4.31
3	2.89%	4.57	2.83%	4.15	3.28%	5.34	3.73%	6.21	2.82%	5.05
high	4.19%	7.24	4.28%	7.36	4.27%	5.96	3.57%	5.74	3.33%	4.66
high - low	2.34%	4.03	1.85%	4.90	2.74%	5.39	1.02%	1.37	0.23%	0.39

Panel B. Sort on Past Earnings Surprises

	N_ANALYSTS		SUE		CAR		Var(SUE)		Var(CAR)	
	Holding Ret	t-stat	Holding Ret	t-stat	Holding Ret	t-stat	Holding Ret	t-stat	Holding Ret	t-stat
low	4.67%	5.70	2.49%	3.14	1.83%	2.99	2.11%	2.95	1.12%	1.46
2	3.14%	4.68	3.26%	4.27	2.45%	4.05	2.55%	4.52	2.78%	4.09
3	1.78%	3.34	2.45%	4.40	2.90%	3.86	3.05%	4.63	3.36%	5.88
high	2.12%	3.75	3.80%	5.77	4.27%	7.94	3.25%	4.69	3.95%	7.64
high - low	-2.55%	-3.35	1.31%	1.89	2.44%	4.71	1.13%	1.37	2.84%	4.47

Panel C. Sort on Past Transaction Costs

	STOCK_SPREAD		STOCK_VOLUME		OPTION_SPREAD		OPTION_VOLUME	
	Holding Ret	t-stat	Holding Ret	t-stat	Holding Ret	t-stat	Holding Ret	t-stat
low	2.21%	3.50	5.83%	7.07	1.14%	2.28	5.82%	6.11
2	2.65%	4.01	3.07%	5.31	1.82%	3.01	2.68%	4.69
3	3.75%	6.30	2.20%	3.55	3.16%	5.33	1.59%	2.97
high	3.29%	6.12	1.33%	2.05	4.93%	6.74	0.90%	2.27
high - low	1.08%	1.84	-4.50%	-4.95	3.79%	5.33	-4.92%	-5.42

Table 5. Predicting Delta-Neutral Straddle Returns [-3,0] with Fama-Macbeth Regressions, Time-Series Sample

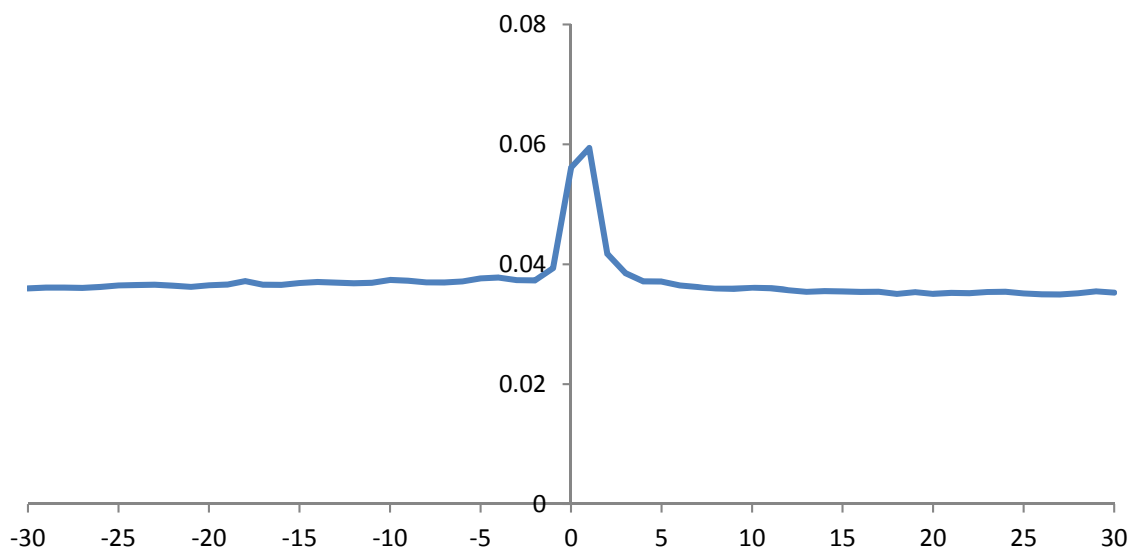
Our sample is from January 1996 to December 2013. Options data is from Option Metrics. We apply filter (1) to (10) to the options data. Delta-neutral straddles are computed over [-3,0], relative to earnings announcement days, where day 0 is the earnings announcement day. If there is more than one straddle for a stock over one period, we use volume weighting. In each quarter, we estimate a cross-sectional regression for straddle returns. Then, we average all quarterly coefficients over 72 quarters to conduct inferences. Historical moments are computed over the past 3-month daily returns, and historical jump statistics are computed using the past 12-month daily returns. The cumulative abnormal return, CAR, is computed over [-1,1] around earnings announcements and adjusted for the market return. Earnings surprises, SUE, are calculated as the difference between announced earnings and consensus forecast. The variance of SUE and CAR are computed using data from the previous 8 quarters. We rely on a variable reduction technique to choose variables to include in the last regression. We compute t-statistics using Newey-West standard errors with 3 lags.

	I		II		III		IV		V		VI	
	Coef.	t-stat	Coef.	t-stat	Coef.	t-stat	Coef.	t-stat	Coef.	t-stat	Coef.	t-stat
INTERCEPT	-0.273	-2.20	-0.003	-0.27	0.027	2.17	0.000	0.04	-0.684	-2.16	-0.642	-2.04
DAYS_TO_MATURITY	-0.000	-0.01							0.000	1.31		
MONEYNESS	0.385	3.19							0.627	2.47	0.540	4.84
ln(SIZE)	-0.010	-5.60							-0.000	-0.04		
ln(B/M)	-0.000	-0.19							0.011	0.84		
PAST_RETURN	0.001	0.22							-0.006	-0.57		
ln(KURTOSIS)			0.018	3.37					0.010	1.33	0.014	2.85
JUMP_FREQ			0.547	1.66					2.141	0.95		
JUMP_SIZE			0.006	0.30					-0.042	-0.96		
N_ANALYSTS					-0.001	-2.88						
Var(CAR)					0.208	3.16			0.107	1.16	0.192	3.22
Var(SUE)					-0.204	-0.16			-0.835	-0.67		
OPTION_VOLUME							-0.000	-0.42	0.000	0.55		
OPTION_SPREAD							0.217	4.44	0.234	2.80	0.171	2.74
STOCK_SPREAD							4.299	2.29	-0.385	-0.16		
R ²	3.99%		2.12%		2.97%		2.26%		12.26%		3.77%	
Adj. R ²	1.29%		0.29%		0.42%		0.61%		2.06%		1.46%	

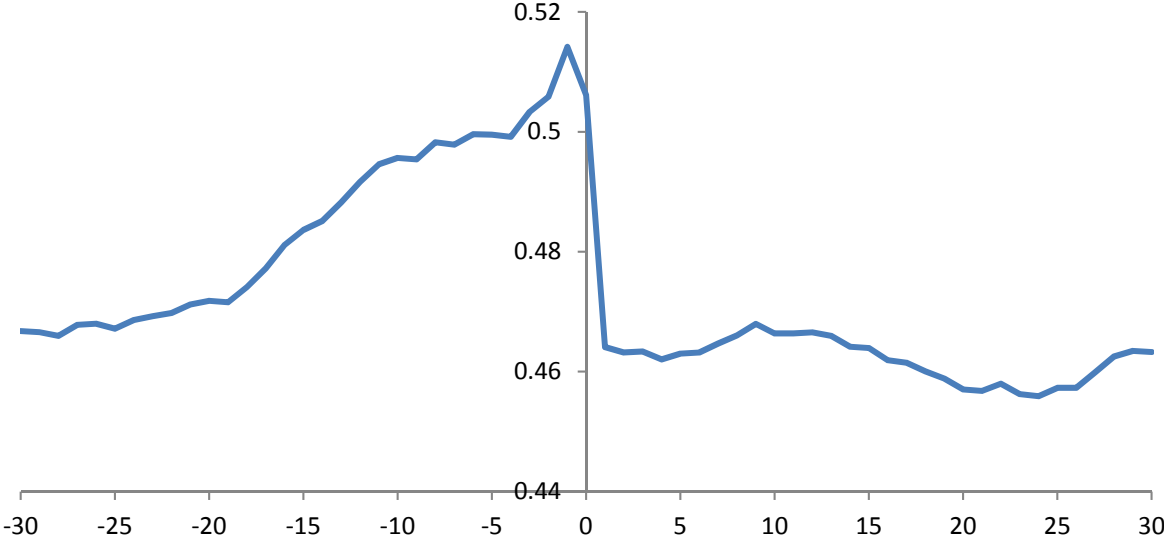
Figure 1. Realized Volatility and Implied Volatility around Earnings Announcements, Pooled Sample

Data is from January 1996 to December 2013. Panel A reports mean range-based volatilities as the difference between the highest and lowest trading price during the day, scaled by closing price. Panel B reports mean implied volatilities for short term at-the-money calls and puts around earnings announcements. Panel C reports the average option trading volume including all call and put options. Day 0 is the earnings announcement day. All numbers are computed as pooled averages, which are the averages over a pooled sample over time and over firms.

Panel A. Mean of Range-Based Volatilities



Panel B. Mean of Implied Volatilities



Panel C. Mean of Option Trading Volumes

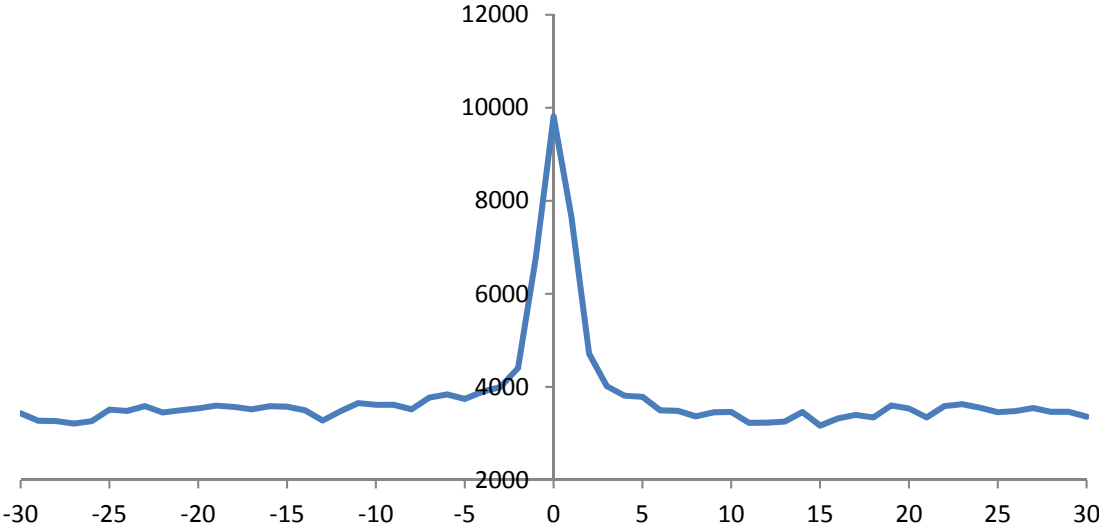
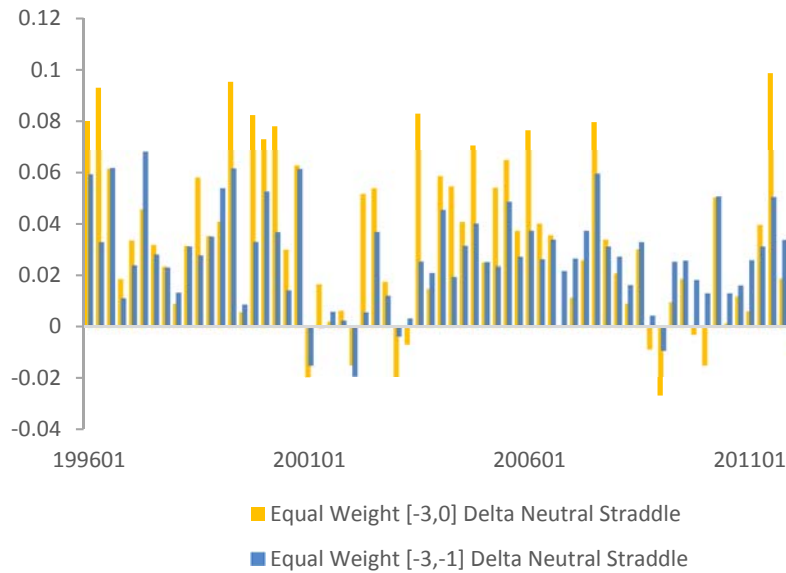


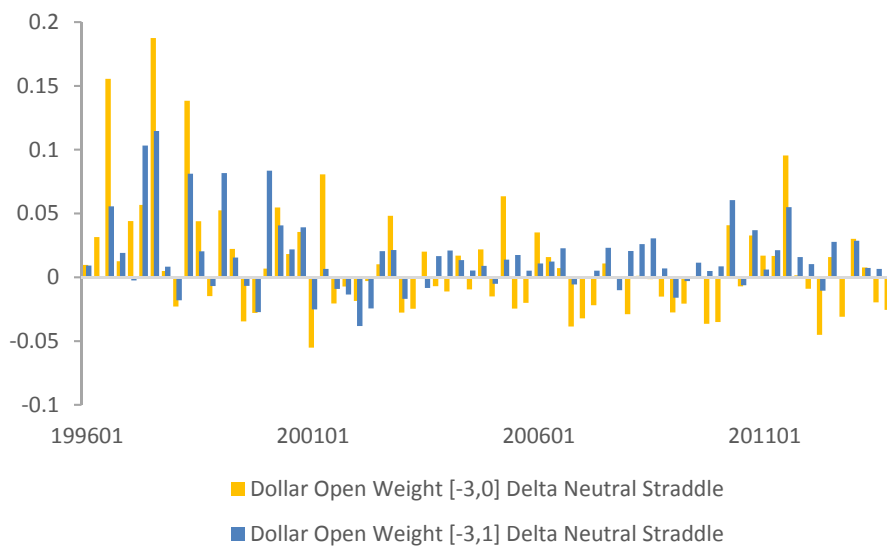
Figure 2. Delta-Neutral Straddle Returns over Time, Time-Series Sample

Our sample is from January 1996 to December 2013. Data on options is from Option Metrics. We apply filter (1) to (10) to the options data. The figure plots the time-series delta-neutral straddle returns over different windows around earnings announcements, where day 0 is the earnings announcement day. We further require a non-missing daily price, positive daily open interest, and positive daily volume in each strategy window. In the event a stock has more than one pair of at the money straddles, we use volume weight stock level straddles. We report time series straddle returns across firms using both equal weights and dollar open interest weights.

Panel A. Delta-Neutral Straddle Returns, Equal Weight across Firms



Panel B. Delta-Neutral Straddle Returns, Dollar Open Weight across Firms



Internet Appendix

“Anticipating Uncertainty: Straddles Around Earnings Announcements”

Table 1. Summary Statistics for the Time Series Sample with Stricter Liquidity Filters

Our sample period is from January 1996 to December 2013. We obtain data from several data sources. Data on stock returns and firm characteristics, accounting data, and earnings announcements are obtained from CRSP, COMPUSTAT, and IBES, respectively. Data on options is from Option Metrics. We apply filter (1) to (10) to the options data. Moneyness is defined as stock price divided by strike price. In this sample, comparing to Table 1 of the paper, we further require a non-missing daily price, positive daily open interest, and positive daily volume in each event window. We compute open interest for a straddle as the number of contracts outstanding in 100's, summing open interests from both call and put in the straddle. Similarly, we compute the daily volume of a straddle as the number of contracts traded in 100's, summing daily volumes from both calls and puts in the straddle. Implied volatility for a straddle is the average of implied volatility of calls and puts in the straddle. The panels below report summary statistics on stock and straddle characteristics, which are computed over a pooled sample across firms/straddles and across time.

Panel A. Stock characteristics

	N	Mean	Median	Std
Market cap (\$ mil)	22603	16488	4539	39009
Book to market ratio	22285	0.433	0.320	0.434
Past 12 month return	22595	0.133	0.140	0.455
Past 3 month daily return volatility (annualized)	22579	0.026	0.023	0.014
Past 3 month daily return skewness	22579	0.050	0.076	1.129
Past 3 month daily return kurtosis	22579	5.644	3.847	5.261

Panel B. Straddle characteristics

	N	Mean	Median	Std
Moneyness	42080	1.010	1.007	0.027
Days to maturity	42080	36	33	13
Open interest	42080	3868	1266	9479
Volume	42080	652	103	2341
Implied volatility	42080	0.465	0.424	0.207

Table 2. Day-to-day Delta-Neutral Straddle Returns, Time Series Sample

Our sample is from January 1996 to December 2013. Data on options is from Option Metrics. We apply filter (1) to (10) to the options data. This table reports time series average daily returns on at-the-money delta-neutral straddles over different windows around earnings announcements, where day 0 is the earnings announcement day. Different from Table 3 Panel B, instead of a buy-and-hold strategy, we use the beginning value weight of the call and put options when the straddle is constructed, which assumes daily rebalance. In the event that a stock has more than one pair of at-the-money straddles, we use equal weight or volume weight for different straddle pairs for the same stock. To aggregate across stocks, we use either equal weights or use last month dollar open interest as weights across different firms. To compute time series average returns, we first compute the quarterly average return across firms, and then we average over all quarters. We compute t-statistics using Newey-West standard errors with 3 lags.

Weighting		equal		equal		dollar open		dollar open	
across firms		equal		volume		equal		volume	
within firms		equal		volume		equal		volume	
holding period	day	holding ret	t-stat	holding ret	t-stat	holding ret	t-stat	holding ret	t-stat
[-3,1]	[-3,-2]	0.70%	5.36	0.65%	4.65	0.21%	1.38	0.22%	1.50
	[-2,-1]	1.79%	13.15	1.76%	12.13	1.29%	5.81	1.34%	6.19
	[-1,0]	2.08%	4.98	1.89%	4.43	0.92%	2.34	0.81%	2.11
	[0,1]	1.18%	4.02	1.02%	3.52	-0.07%	-0.14	-0.24%	-0.44
[-1,1]	[-1,0]	2.13%	6.07	1.88%	5.04	0.43%	1.39	0.40%	1.20
	[0,1]	1.14%	4.30	0.95%	3.41	-0.37%	-0.86	-0.36%	-0.71

Table 3. Delta-Neutral Straddle Returns over [-3,0], Time-Series Sample, Equal Weight Across Firms

Our sample is from January 1996 to December 2013. Data on options is from Option Metrics. We apply filter (1) to (10) to the options data. Straddles are computed over [-3,0], relative to the earnings announcement days. In the event that a stock has more than one pair of short-term at-the-money straddles, we adopt volume weighting. Each quarter, we sort all firms into 4 groups based on previous period stock characteristics, and we average firm-level straddle returns for each of the four groups using equal weights. The means and t-statistics are computed over 72 quarters for each of the 4 groups. We compute t-statistics using Newey-West standard errors with 3 lags.

Panel A. Different Industries

industry	N(firms)	Holding period return	t-stat
Non-Durables	13	1.32%	1.34
Durables	8	2.76%	2.06
Manufacturer	36	2.73%	2.68
Energy	19	1.90%	2.64
Chemicals	12	1.35%	1.24
Business Equipment	67	4.48%	9.45
Telecom	5	3.94%	1.59
Utilities	9	0.71%	0.29
Shops	45	3.19%	3.81
Health Care	25	3.02%	2.93
Money	32	1.78%	2.13
Other	45	3.41%	5.32

Panel B. Commonly Used Stock Characteristics

	size		BM		past return	
	holding ret	t-stat	holding ret	t-stat	holding ret	t-stat
low	5.01%	7.42	2.81%	4.43	3.72%	6.13
2	4.42%	5.99	2.68%	4.59	2.30%	3.61
3	2.27%	4.95	3.19%	5.23	2.78%	4.96
high	0.93%	1.38	3.42%	4.67	3.48%	4.39
high - low	-4.08%	-4.95	0.61%	0.96	-0.24%	-0.30

Panel C. Commonly Used Options Characteristics

	Days to maturity		Put call ratio		Hist. vol-IMPLIED vol	
	holding ret	t-stat	holding ret	t-stat	holding ret	t-stat
low	3.88%	5.29	3.46%	5.15	2.52%	4.97
2	1.95%	2.97	3.43%	4.77	2.81%	4.62
3	2.38%	3.34	2.34%	4.36	4.02%	5.25
high	3.13%	7.35	2.23%	4.92	2.86%	4.01
high - low	-0.75%	-1.43	-1.24%	-2.02	0.34%	0.47

Table 4. Delta-Neutral Straddle Returns over [-3,-1], Time-Series Sample, Dollar Open Interest Weighted across Firms

Our sample is from January 1996 to December 2013. Data on options is from Option Metrics. We apply filter (1) to (10) to the options data. Straddles are computed over [-3,-1], relative to earnings announcement days. In the event that a stock has more than one pair of short term at-the-money straddles, we adopt volume weighting. Each quarter, we sort all firms into 4 groups based on previous period stock characteristics, and we average firm-level straddle returns for each of the four groups using the previous quarter end dollar open interest as a weight for each stock. The means and t-statistics for each group are computed over 72 quarters for each of the four groups. We compute t-statistics using Newey-West standard errors with 3 lags.

Panel A. Different Industries

industry	N(firms)	Holding return	t-stat
Non-Durables	13	0.12%	0.15
Durables	8	4.06%	3.14
Manufacturer	36	1.78%	2.23
Energy	19	1.63%	1.81
Chemicals	12	1.26%	1.63
Business Equipment	67	1.39%	2.53
Telecom	5	3.50%	2.53
Utilities	9	0.72%	0.76
Shops	45	2.24%	4.43
Health Care	25	0.86%	1.30
Money	32	1.35%	1.71
Other	45	2.35%	3.69

Panel B. Commonly Used Stock Characteristics

	size		BM		past return	
	holding ret	t-stat	holding ret	t-stat	holding ret	t-stat
low	2.15%	5.16	1.87%	3.20	2.00%	4.58
2	2.03%	4.98	1.04%	2.38	1.29%	1.96
3	1.68%	4.78	0.72%	1.60	1.60%	4.33
high	1.24%	2.55	2.62%	4.02	1.40%	2.51
high - low	-0.91%	-1.96	0.74%	0.97	-0.60%	-0.91

Panel C. Commonly Used Options Characteristics

	Days to maturity		Put call ratio		Hist. vol-IMPLIED vol	
	holding ret	t-stat	holding ret	t-stat	holding ret	t-stat
low	3.33%	7.17	1.83%	2.84	0.90%	1.71
2	0.39%	0.77	2.04%	3.21	0.90%	1.95
3	1.33%	2.55	1.40%	2.88	1.67%	2.86
high	2.02%	5.31	0.83%	1.91	1.80%	4.07
high - low	-1.31%	-4.19	-1.00%	-1.09	0.90%	1.46

Table 5. Daily Fama-MacBeth WLS Regressions, Time-Series Sample

Our sample is from January 1996 to December 2013. Data on options is from Option Metrics. We apply filter (1) to (10) to the options data. Day 0 is the earnings announcement day. If there is more than one straddle for a stock over one period, we use volume weighting. Every day, we estimate a cross-sectional regression for straddle return. Then, we average all daily coefficients over all the days to conduct inferences. Historical moments are computed over past 3-month daily returns, and historical jump statistics using the past 12-month daily returns. The cumulative abnormal return, CAR, is computed over [-1, 1] around earnings announcements and adjusted for market return. Earnings surprises, SUE, are calculated as the difference between announced earnings and consensus forecast. The variance of SUE and CAR are computed using data from the previous 8 quarters. We rely on a variable reduction technique to choose variables to include in the last regression. We compute t-statistics using Newey-West standard errors with 3-lags.

	I		II		III		IV		V		VI	
	Coef.	t-stat	Coef.	t-stat	Coef.	t-stat	Coef.	t-stat	Coef.	t-stat	Coef.	t-stat
Intercept	-0.003	-0.19	0.002	2.03	-0.004	-3.11	0.000	0.39	-0.112	-1.24	0.001	2.06
Event Day Dummy, Day -2	0.006	7.58	0.006	7.35	0.004	4.93	0.007	8.19	0.005	5.01	0.006	7.28
Event Day Dummy, Day -1	0.014	15.16	0.012	13.39	0.009	11.48	0.014	15.00	0.010	9.80	0.012	13.88
Event Day Dummy, Day 0	0.009	4.98	0.006	3.58	0.003	2.14	0.007	3.85	0.005	3.17	0.006	3.54
Event Day Dummy, Day +1	0.002	0.92	0.003	1.69	0.005	2.79	-0.001	-0.36	0.003	1.61	0.001	0.40
DAYS_TO_MATURITY	0.000	1.17							0.000	1.69		
MONEYNESS	-0.006	-0.38							0.089	1.07		
ln(SIZE)	0.001	4.49							0.000	0.26		
ln(B/M)	0.000	1.85							-0.004	-0.57		
PAST_RETURN	0.001	2.24							-0.017	-1.15		
ln(KURTOSIS)			-0.001	-2.85					-0.001	-0.50		
JUMP_FREQ			-0.100	-2.23					1.065	1.22	-0.174	-4.99
JUMP_SIZE			0.000	-0.10					-0.009	-0.98		
N_ANALYSTS					0.000	2.84						
Var(CAR)					0.006	0.69			-0.046	-0.79		
Var(SUE)					0.639	2.07			-0.064	-0.62		
OPTION_VOLUME							0.000	-0.66	0.000	1.02		
OPTION_SPREAD							-0.002	-0.63	0.019	2.97		
STOCK_SPREAD							-0.535	-3.80	-0.484	-2.08	-0.351	-2.29
R ²	17.00%		12.90%		18.06%		9.50%		45.59%		8.49%	
Adj. R ²	13.90%		9.10%		11.61%		7.30%		31.74%		5.90%	

Table 6. Noise and Transaction Costs, Delta-Neutral Straddle Returns over [-3,-1], Dollar Open Interest Weighted, Time Series Sample

Our sample is from January 1996 to December 2013. Data on options is from Option Metrics. We apply filter (1) to (10) to the options data. Straddles are computed over [-3,-1], relative to the earnings announcement days. In the event a stock has more than one pair of short term at-the-money straddles, we adopt volume weighting. Each quarter, we sort all firms into 4 groups based on previous period characteristics, and we average firm-level straddle returns for each of the four groups. The means and t-statistics for each group are computed over 72 quarters. We compute t-statistics using Newey-West standard errors with 3 lags.

Panel A. sort on past high moments and jumps

	volatility		skewness		kurtosis		jump freq		jump size	
	holding ret	t-stat	holding ret	t-stat	holding ret	t-stat	holding ret	t-stat	holding ret	t-stat
low	1.07%	2.22	1.09%	2.16	0.56%	1.30	1.00%	1.33	1.56%	3.09
2	1.68%	3.12	1.34%	2.47	1.76%	4.02	1.84%	3.00	1.60%	3.60
3	1.17%	2.51	1.27%	3.23	1.55%	3.16	1.81%	3.12	2.41%	4.53
high	1.40%	2.51	1.88%	2.64	2.06%	3.10	1.93%	2.49	1.49%	2.05
high - low	0.33%	0.47	0.80%	0.97	1.50%	2.05	0.93%	0.80	-0.07%	-0.09

Panel B. sort on past earnings surprises

	N analyst		SUE		CAR		Var(SUE)		Var(CAR)	
	holding ret	t-stat	holding ret	t-stat	holding ret	t-stat	holding ret	t-stat	holding ret	t-stat
low	2.57%	4.79	1.96%	2.05	1.21%	1.91	1.42%	2.85	0.89%	2.62
2	2.34%	4.02	1.29%	2.11	1.23%	1.86	1.25%	1.83	1.70%	2.62
3	0.91%	3.31	0.94%	1.40	1.39%	2.48	1.40%	1.83	1.60%	2.94
high	1.41%	2.11	1.83%	4.19	2.00%	2.91	1.70%	3.21	1.92%	2.71
high - low	-1.16%	-1.73	-0.14%	-0.15	0.79%	1.42	0.29%	0.41	1.03%	1.40

Panel C. sort on past transaction costs

	stock spread		stock volume		option spread		option volume	
	holding ret	t-stat	holding ret	t-stat	holding ret	t-stat	holding ret	t-stat
low	1.21%	2.09	2.98%	7.93	1.15%	2.16	3.50%	6.85
2	1.39%	4.21	2.18%	7.03	1.37%	4.64	2.18%	5.62
3	2.32%	3.61	2.31%	5.94	2.10%	4.37	1.92%	4.74
high	0.98%	1.81	1.07%	2.40	3.73%	7.13	1.20%	2.63
high - low	-0.24%	-0.35	-1.91%	-3.33	2.58%	3.08	-2.30%	-3.40